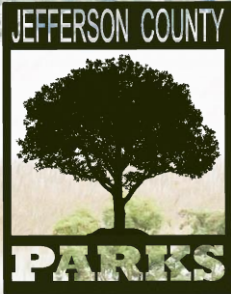




**Jefferson County, Wisconsin
Parks, Recreation and Open Space Plan
2020-2025**

August 1, 2020



Jefferson County, Wisconsin
Parks, Recreation and Open Space Plan
2020-2025

The Jefferson County Parks Department gives thanks and appreciation to the following people who gave of their time and talents to produce this update to the Jefferson County Parks, Recreation and Open Space Plan. The Department thanks the Jefferson County Board, Administrators, Staff, and community members and leaders for their continued support.

Jefferson County Administrator
Ben Wehmeier

Jefferson County Board of Supervisors
Steve Nass, Chair
Amy Rinard, First Vice Chair
James Braughler, Second Vice Chair

Jefferson County Parks Committee
Greg David
Jeff Johns
Mike Kelly
Jeff Smith
Augie Tietz

Jefferson County Staff
Kevin Wiesmann, Superintendent
Mary Truman, Program Assistant
JR Klement
Mike Malaczewski
Ryan Polenski
Lindsay Rheingans

Community Advisors
Andy Didion
Walt Christensen
Frankie Fuller
Kirk Lund
Ed Morse
Hope Oostdik
Stacey Schraufnagel
Steve Sharp
Jim Schroeder
Traci Wilson

Consultants
Steve Grabow
Margaret Burlingham, LanDesign
Gerald Kokkonen, Land and Water Conservation Department, Mapping

Table of Contents

Acknowledgements	
Executive Summary	1
Jefferson County Parks System Map	3
Jefferson County Board Resolution	4
Jefferson County Parks Accomplishments	5

Jefferson County Parks Recreation and Open Space Plan

Mission and Vision Statements	6
Implementation Strategies	10
Capital Improvement Plan	17
Jefferson County Park Shelter Amenities 2020 Chart	18

Needs Assessment

Overview and Existing Park Facilities and Proposed Improvements	19
Demographics	38
Public Participation Summary	45
Statewide Comprehensive Outdoor Recreation Plan 2019-2023	52

Natural Resources Overview

Overview	55
Maximum Elevations and Upland Woods Map	65
Wetlands and Floodplain Map	66
Land Use/Land Cover 2018 Map	67

Appendix

Appendix I – Planning Context	A-1
Glacial Heritage Area Plan	A-1
Appendix II – Grants and Funding Sources	A-5

Executive Summary

The *2020-2025 Jefferson County Parks, Recreation and Open Space Plan* provides the Parks Department with facility and acquisition recommendations and an implementation plan for moving forward through 2025. The comprehensive plan must be updated every five years and was approved by the Jefferson County Board on August 10, 2020 to qualify the Parks Department for state and federal funding for park acquisition and development.

To update the comprehensive plan, the Jefferson County Parks Department undertook a systematic and public process to assess recreational trends, review and update mission and vision statements, document accomplishments and facility upgrades, plan for the future, and develop a capital improvement plan for the following five years.

Jefferson County has completed extensive land use, water resource, and park planning over the last twenty five years. All of these plans are interconnected and function together to protect natural resources and enhance the quality of life, health, and economic development for the citizens of the County. The Jefferson County Parks System strives to balance conservation of natural resources in large, rural parks with public recreation and activities. The parks enhance economic activity county-wide by drawing users to extensive trails, an award winning dog park, and unique cultural features.

The Jefferson County Parks Department has the following mission and vision statements:

Mission

The mission of the Jefferson County Parks Department is to be a catalyst for building healthy communities that people want to live in and visit. The Parks System preserves natural resources for public use and conservation, operates and maintains a parks system with resource oriented recreation, trails, and special use parks; and expands the parks system for environmental and land use benefits, improved physical and mental health, outdoor education, and enjoyment.

Visions

- I. The Jefferson County Parks system of large natural resource-based parks, county-wide trails, and cultural features is an integral part of the County's landscape of vital and distinctive communities, natural areas, and working farms. The Parks create special places for citizens and visitors to interact with nature and history, exercise and play, and enjoy the outdoors.
- II. The Jefferson County Parks system provides multiple recreational activities and facilities in outdoor natural settings for all ages and abilities, in a way that balances recreation and conservation values.
- III. Jefferson County continues to acquire unique recreational lands and natural resource areas for public use in a planned way that keeps pace with County population growth.
- IV. The Jefferson County Parks Department takes pride in and sustains a high standard of park design, construction, accessibility, management, safety, and maintenance. Collaboration and communication between staff, county departments, municipalities, and the public is a priority.

- V. The Jefferson County Parks Department promotes public awareness of the Parks System and advocates for the community health and environmental benefits of outdoor recreation, exercise, and family activities while protecting important natural areas and water bodies.

The Jefferson County Parks System

In 2020, the Parks System operated 22 parks on 1,180 acres throughout the County, over 19 miles of hiking trails, 35 miles of off and on-road bicycle/pedestrian trails along the Glacial River Trail and Interurban Trail, and 199 miles of snowmobile trails. Bicycle routes have been designated on lightly traveled roads throughout the County. This system of “pearls on a string” with rural parks connected by trails and bicycle routes to cities, villages, and hamlets is extensively documented in the *Glacial Heritage Area Plan* of 2009. A variety of outdoor activities from hiking, picnicking, bicycle riding, rustic camping, a large dog park, mountain biking, historic sites, Frisbee golf, boating, fishing, enjoying nature, and snowmobiling draws park users from throughout the County and beyond.

Public Process

The Parks Department strives to be inclusive of all community members in planning for the future. The planning process convened meetings with all staff, local stakeholders, community leaders, park advocates, conservation organizations, and county administrators. The Parks Committee has been instrumental in reviewing the plan. Several public meetings were planned. The Covid-19 pandemic changed public meeting plans after the first meeting on February 17, 2020. An online questionnaire asking what the Parks Department was doing right and what could be improved was sent out to stakeholders and advertised throughout the county. Over 45 responses came in.

The public greatly appreciates the existing parks, high degree of maintenance, and the diversity of landscapes and features among the parks. The large parks such as Dorothy Carnes Park and the Jefferson County Dog Park were treasured the most, along with bicycle trails and hiking trails. The respondents asked for more bicycle trails connecting to cities and villages, more mountain bike trails, more educational and interpretive opportunities, and more water access. Several comments suggested getting youth more involved in the parks.

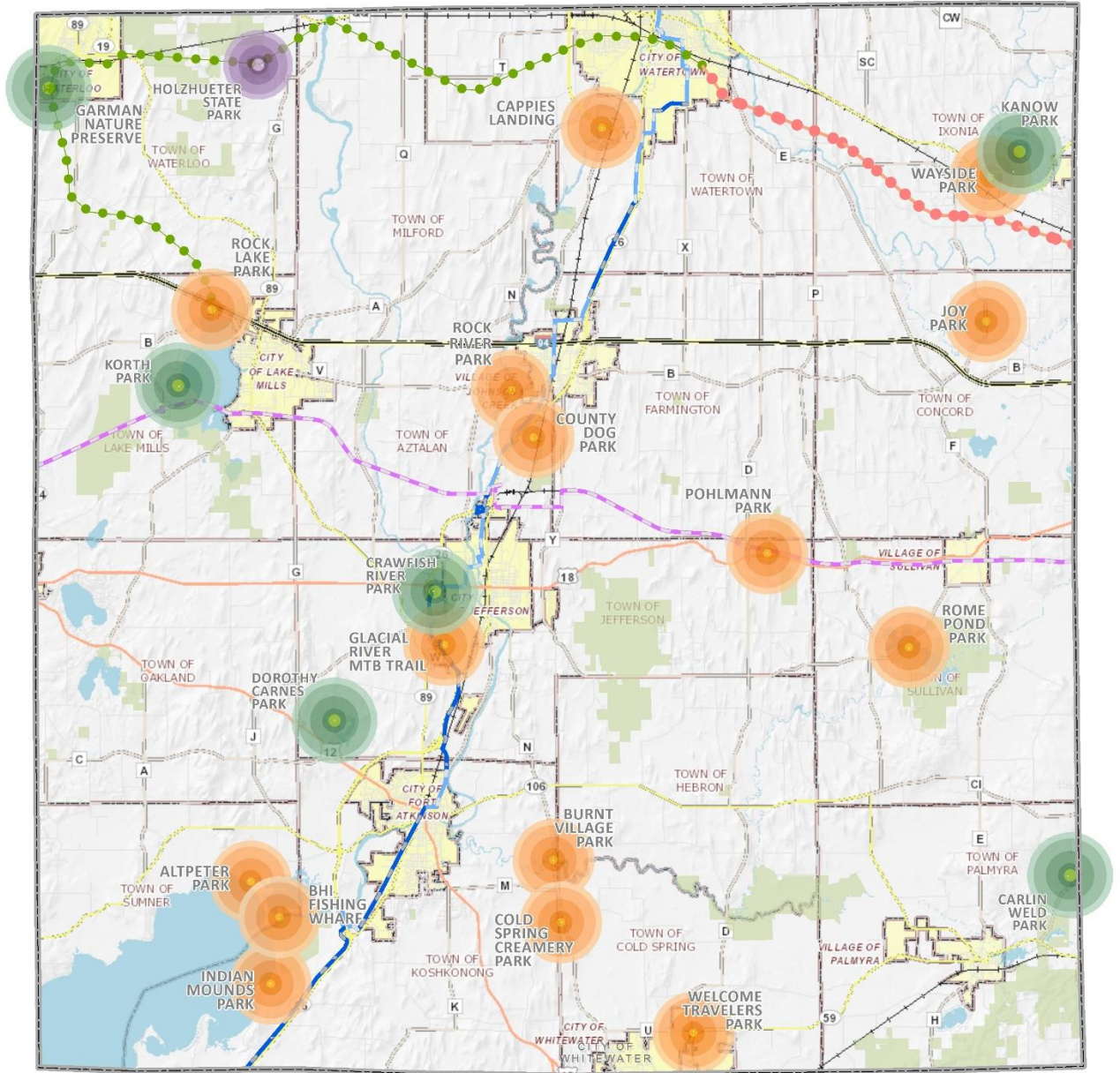
New Recommendations

The Jefferson County Parks Department partners with community foundations, businesses, and health care organizations to enhance the lives of County residents. The addition of this sentence to the mission statement, “The mission of the Jefferson County Parks Department is to be a catalyst for building healthy communities that people want to live in and visit” reflects the desire of the Department to be involved with all County communities, not apart from them.

Implementation Recommendations










Implementation and capital improvement plans guide the Department’s work for the next five years.


- Continue to implement current master plans for parks and trails.
- Continue to improve and expand bicycle/pedestrian trails and routes.
- Improve shelters and park pavilions to accommodate a variety of gatherings in all four seasons.
- Improve water access for recreation and partner with local paddling businesses.
- Continue restoration and improvement of historic sites.
- Explore expansion of Dorothy Carnes, Korth and the Garman Nature Preserve in accordance with the *Glacial Heritage Area Plan*.
- Explore potential park land acquisitions and a new dog park in the southern part of the County.
- Explore new methods of fund-raising and marketing to increase the visibility of the parks in and around Jefferson County.



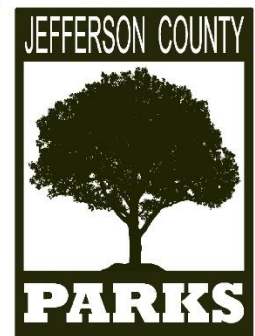
Document Name: BrochureMap2020 Copy
 Jefferson County Land & Water Conservation Dept.
 Date: 7/27/2020

Park System - Features

	Jefferson County Parks		Conservation Parks		Future Conservation Parks - GHA Plan
	Glacial River Trail - Off Road		Interurban Bike Route		
	Glacial River Trail - On Road		Planned Linking Bike Trails		
	Glacial Drumlin Trail		Public Lands		



NORTH



RESOLUTION NO. 2020-20

Updating the Jefferson County Parks, Recreation and Open Space Plan

Executive Summary

The Jefferson County Parks Department has a history of planning for the future. The focus of Jefferson County's Parks, Recreation and Open Space Plan is to preserve natural resources while providing outdoor recreation. This Plan includes a park and trail network that connects cities, villages, and hamlets which will benefit not only local residents, but also draw visitors who want to experience nature, walk, and bike on off-road trails, and visit local establishments. This is the fourth Jefferson County Parks, Recreation and Open Space Plan that has been completed, with prior plans approved in 1997, 2005, and 2013. Jefferson County is currently in the implementation phase of the 2013 Jefferson County Parks, Recreation and Open Space Plan and the Glacial Heritage Area Plan. This resolution updates the existing Parks, Recreation and Open Space Plan for the purpose of identifying future county-wide recreational needs and opportunities, including potential park acquisition areas, and to qualify for federal, state and local grants and funding to further develop the Plan. The Jefferson County Parks Committee considered this resolution at its meeting on August 3rd, 2020, and recommended forwarding to the County Board for adoption.

WHEREAS, the Executive Summary is incorporated into this resolution, and

WHEREAS, the Jefferson County Parks, Recreation and Open Space Plan was last updated in 2013, and

WHEREAS, the focus of the Parks Committee and Parks Department is to provide natural resource based outdoor recreation for the public and to protect natural areas in large rural parks, and

WHEREAS, the Parks, Recreation and Open Space Plan contains an inventory of existing outdoor recreation facilities and an analysis of outdoor recreation needs.

NOW, THEREFORE, BE IT RESOLVED that the proposed updates to the 2020 Jefferson County Parks, Recreation and Open Space Plan are hereby adopted.

Fiscal Note: Adoption of this Plan does not commit Jefferson County to any future expenditures. All future projects and acquisitions will need County Board approval at the time they are proposed. An updated Plan is necessary to continue to qualify for state and federal grants.

Ayes: 26 Noes: 0 Abstain: 0 Absent: 4 Vacant: 0 .

Referred By:
Parks Committee

08-10-2020

REVIEWED: County Administrator: BW; Corporation Counsel: JBW; Finance Director: MD .

Accomplishments 2013 - 2020

This list records the accomplishments and additions to the Parks System since the *2013 Jefferson County Parks, Recreation and Open Space Plan*. The Jefferson County Park System map is on page 3.

New Acquisitions

- Acquisition of Cappie's Landing with parking, boat landing, shelter, restroom, and rustic camp sites.
- Acquired Hwy K Wayside and Hwy 16 Wayside with boat landing.
- Added 1.9 acres to Indian Mounds Park including Native American Mounds through a land donation.
- Added 5 acres to Garman Nature Preserve and access to Waterloo Road through a combination of donations and county funds (75/25).
- Glacial River Mountain Bike Trails – 18 acres of the county farm converted to hiking and mountain bike trails.
- Crawfish River Park – A donation of 17 acres along the Crawfish River by citizens of Jefferson County.

New Facilities Construction

- Installation of the ADA compliant Blackhawk Island Fishing Pier, parking lot, picnic area and seasonal restroom.
- 9 hole Frisbee golf course at Carlin Weld County Park.
- Glacial River Mountain Bike Park established on County property with trails, obstacles and access to the Glacial River Trail.
- Phase I, 2 miles of the Interurban Trail completed with parking, Rock River bridge and fencing.

Park and Trail Improvements

- Improved fishing access and seasonal restroom at Burnt Village County Park.
- Dorothy Carnes County Park - rebuilt Mason Log Cabin and added interpretive signs, removed unnecessary buildings, and added new parking lot at Mason Farm, added marsh viewing blind on south side of park, youth and ADA hunting provided at the Kemmeter property, added ocular viewer at the overlook and a swing set to west side of park.
- Signs, bicycle sculpture, kiosks and parking added to Glacial River Trail.
- Jefferson County Dog Park and Terri Tinsley Dog Exercise Area added 320' boardwalk, dog memorial statues, two shelters, and finished paving entrance road and parking areas.
- New playground and additional parking at Korth County Park.
- Popular summer Brew With A View event started at Korth Park.
- New shelter and playground at Pohlmann Park.
- Pier and natural shoreline restoration added at Rock River Park.
- Paved Parking Lot at Carlin-Weld Park.
- New playground at Welcome Travelers Park.
- Replaced restroom at Cold Spring Creamery County Park.
- Partnered with Town of Lake Mills to improve Korth Lane and added parking for special events.
- Partnered with City of Waterloo to improve Fox Lane and build Waterloo Regional Trail Facility adjacent to the Garman Nature Preserve.
- Implementation of Rock River Trail initiative through signage and advocacy.
- Several memorial benches donated and installed.

New Planning Efforts

- Master Plan completed for Crawfish River Park, trails maintained by volunteers.
- Plan for interpretive signs at Garman Nature Preserve completed.
- Master Plan completed at Holzhueter State Park.
- Completed International Mountain Biking Association (IMBA) Design Plan for the Glacial River Mountain Bike Trails.

Mission and Vision Statements

The Jefferson County Parks Department mission and vision statements were originally developed during the planning process for the 2005-2010 *Jefferson County Parks, Recreation and Open Space Plan*. Input from the public, stakeholders, the Parks Committee, and Parks staff informed the statements.

The original plan was updated in 2013 and now in 2020. The mission and visions statements have been clarified and updated with each plan review. Implementation strategies for each of the five Vision Statements follow this section on page 10.

Values

The Jefferson County Parks Department strives to do its work and serve the public with these core beliefs:

- Respect for our park users and staff
- Reputation for excellence
- Pride in our accomplishments
- Teamwork to achieve goals

Mission Statement

The mission statement is the over all purpose of the Jefferson County Parks Department. It reflects how the Department serves the public and Jefferson County and informs decisions concerning the Parks System as a whole.

The mission of the Jefferson County Parks Department is to be a catalyst for building healthy communities that people want to live in and visit. The Parks System preserves natural resources for public use and conservation, operates and maintains a parks system with resource oriented recreation, trails, and special use parks; and expands the parks system for environmental and land use benefits, improved physical and mental health, outdoor education, and enjoyment.

Vision Statements

Vision statements lay the groundwork for where the Jefferson County Parks Department is going. The statements describe a future, not current, park system and aid in decision-making and short and long term planning. The Department's work plan for the next five years implements the vision statements.

A detailed explanation of the five vision statements follows each statement.

Vision I

The Jefferson County Parks system of large natural resource-based parks, county-wide trails, and cultural features is an integral part of the County's landscape of vital and distinctive communities, natural areas, and working farms. The Parks create special places for citizens and visitors to interact with nature and history, exercise and play, and enjoy the outdoors.

Vision I Details

Jefferson County Parks reflect the essence of Jefferson County and provide the public with opportunities to see and interact with the landscape and natural features that include woodlands, prairies, wetlands, waterways, geological formations, wildlife, scenic views, and cultural features such as historic farmsteads and Native American Mounds.

Bicycle and pedestrian trails connect County Parks with cities, villages, hamlets and other parks. Trail corridors encourage users to slow down and experience the rural and natural character, undulating topography, and the invigorating seasons of Jefferson County.

The Parks Department works with the public, the Jefferson County Historic Site Preservation Commission, the State Historical Society, the Ho-Chunk Nation, universities and colleges, and other cultural groups to respect, protect and preserve historic icons in County Parks and along trails, including buildings with historical and cultural significance and Native American Mounds.

Vision II

Jefferson County Parks provide multiple recreational activities and facilities in an outdoor natural settings for all ages and abilities in a way that balances recreation and conservation values.

Vision II Details

The Jefferson County Parks Department studies and monitors trends in outdoor recreation, exercise, and health care to consider existing and new activities in which participation is increasing.

Accessibility to park experiences is offered to the less able wherever possible.

Multiple activities are offered in large parks for family togetherness and public enjoyment such as picnicking, open areas for play, playgrounds, in-park bicycle and mountain bike paths, hiking and interpretive trails, fishing, camping, boat launches, scenic drives, community gardens, dog parks, sports like Frisbee golf, and cultural and historical sites to explore.

Jefferson County Parks protect unique and significant natural resource areas as preserves within the Parks System. Nature-based conservation parks offer primarily silent sport experiences such as hiking, nature study, nature photography, bird watching, cross-country skiing, snowshoeing, and non-motorized water sports such as canoeing and kayaking.

Some Parks are places to experience and learn about the historical and cultural context of Jefferson County through restored and protected buildings, farmsteads and Native American Mounds.

Off-road and on-road bicycle and pedestrian trails are an important and desired component of the Parks System connecting parks with cities, villages, and hamlets throughout Jefferson County and beyond.

Vision III

Jefferson County continues to acquire unique recreational lands and natural resources areas for public use in a planned way that keeps pace with County population growth.

Vision III Details

Jefferson County has adopted the standard of 12 acres of park land per 1000 residents. The Parks system complements and enhances the vision and details of the *Glacial Heritage Area Plan* for a major system of diverse parks, trails, and resource conservation areas serving local and regional needs. Potential park lands are identified, prioritized and acquired from willing sellers in a planned way. Land may be acquired in fee or through conservation easements for new undeveloped conservation parks, for the expansion of existing parks, and to preserve biological diversity. The following natural and cultural resources are priorities:

- Lakes
- Wetlands
- River corridors
- High points and drumlins
- Large woodlands
- High quality native plant communities
- Wildlife corridors
- Native American Mounds and historic sites
- Groundwater recharge areas

Trail and greenway corridors are identified and acquired in fee or as easements to link parks and urban areas in accordance with the *Jefferson County Bicycle Plan* and *Glacial Heritage Area Plan*.

The public seeks more interaction with the rivers and lakes in Jefferson County and land may be acquired to provide access to water and canoe/kayak trails, to preserve habitat, and to improve water quality.

Conservation easements may be acquired or donated to buffer parks from development, preserve environmental corridors, create linkages and greenways, protect areas for future park expansion, and to preserve agricultural land adjacent to a park project area.

The Jefferson County Parks Department has endowment and donor advised funds in place for acquisition purposes and development.

Vision IV

The Jefferson County Parks Department takes pride in and sustains a high standard of park design, construction, accessibility, management, safety, and maintenance. Collaboration and communication between staff, county departments, municipalities, and the public is a priority.

Vision IV Details

Jefferson County Parks perform several key functions that require a variety of skills and staff:

- Grounds and facilities maintenance
- Vegetation and wildlife management
- Visitor and staff safety
- Capital program and large-scale facilities implementation

The Jefferson County Parks Department has sufficient trained and engaged staff and the equipment to maintain and improve park properties now and in the future. It is a full-time department and has full-time staff that is sufficient to operate the parks seven days a week year-round. Operations equipment is available and in good condition to accomplish tasks efficiently. Staff is trained to maintain and restore native vegetation and manage wildlife. Visitor and staff safety is and will continue to be the highest

priority. Parks staff works cooperatively with other entities to accomplish County Park initiatives and pursues successful funding strategies.

Vision V

The Jefferson County Parks Department promotes public awareness of the Parks System and advocates for the community health and environmental benefits of outdoor recreation, exercise, and family activities while protecting important natural areas and water bodies.

Vision V Details

The Jefferson County Parks Department has in place a communication plan to inform the public and County Board of its initiatives, park locations, natural resources, recreational activities, and events. The Department engages with the Jefferson County Tourism Council, Chambers of Commerce, Economic Development Agencies, and local and regional publications to promote park awareness, the economic impact of the Parks System, and its direct benefits to communities, residents, and the environment. Working cooperatively with local health care providers to inform the public conveys the benefits of exercise and experiencing nature for physical and mental health.

Jefferson County becomes a Midwestern model for healthy communities, thriving ecosystems, and sustainable economic growth.

Implementation Strategies

Implementation strategies and recommendations bring the *Visions* for the Jefferson County Parks Department and System to life. This section is the basis for the Department's work plan for the next five years. The Capital Improvement Plan follows on page 17 and specific implementation recommendations for each park and trail begin on page 19.

Park System Planning Strategies

The Jefferson County Parks Department has been proactive in planning by developing comprehensive plans for the system and master plans for each park, both of which provided public input opportunities.

The Parks Department was extensively involved in the Wisconsin Department of Natural Resource's 2009 *Glacial Heritage Area Plan* that laid out a system of pearls (parks) on a string (connecting trails) throughout Jefferson County and into adjacent counties. To continue the Department's commitment to good planning, the following strategies will be employed.

- Update the *Jefferson County Parks and Outdoor Recreation Plan* every five years to remain grant eligible and re-evaluate trends in recreation and community needs.
- Involve park users and the public when planning park facilities to both encourage their input on park activities and facilities and to educate the public about the natural resources of Jefferson County.
- Consult with all parks staff, County Board members, and Administration during planning efforts.
- Continue to implement and update approved Park Master Plans and the *Glacial Heritage Area Plan* to provide recreation and conservation opportunities
 - Continue to implement the recommendations of the *Mason Farm Site Plan* and *Dorothy Carnes Master Plan* at Dorothy Carnes County Park East.
 - Continue to implement the *Korth Park Master Plan*.
 - The Holzheuter Farm Park has been purchased by the WDNR. Develop a Memorandum of Understanding with the WDNR for park management and approve the Holzhueter State Park Master Plan
 - Continue to implement the Interurban Line Trail project
 - Continue to implement the Glacial Heritage Area Water Trails; add access and paddle-in rustic camping.
 - Develop a management plan for flood mitigation properties throughout the County for public use.

Recreation and Conservation Strategies

Individual park and trail master plans provide the implementation details for recreation and conservation at each property. The strategies below generally apply to all the parks and trails though there may be specific priority recommendations for certain properties. Detailed recommendations are found in the following Existing Park Facilities and Proposed Improvements section beginning on page 19.

- Americans with Disabilities Act (ADA) recommendations are implemented in all parks.

- All new park structures are built to be universally accessible.
 - Accessible decks, boardwalks, playgrounds, and interpretive displays immerse the less able in park and natural experiences.
 - Special “golf cart” days or other activities provide access to all parts of the parks.
- Cultivate formal friends groups that are contracted to complete specific tasks. Current groups are the Friends of Rose Lake, Friends of the Glacial Heritage Area, Friends of the Dog Park, and a Mountain Biking group. Form a friends group for Crawfish River Park.
- Preserve and improve natural areas through acquisition and landscape restoration by removing invasive species, periodic controlled burns, new seedings and plantings, wildlife management, shoreline restoration and cleanup, tree planting, and writing management plans for natural areas. Implement approved hunting and trapping policies where needed for management purposes.
- Inform and involve the public in stewardship activities. Educate users on natural seasonal changes that may require closing some trails at certain times of the year, such as bird and waterfowl nesting seasons.
 - Interpretive signs, guided walks, group activities, and school field trips provide educational opportunities within the parks.
 - A volunteer coordinator helps guide educational and volunteer efforts.
 - Friends groups at specific parks offer and coordinate learning experiences. Educational activities may be jointly planned with the Friends of the Glacial Heritage Area, Friends of Rose Lake, and other groups when appropriate.
 - Develop a periodic newsletter to interest the public in the parks and activities.
 - Educate dog owners on leash requirements to protect wildlife and other park users.
 - Engage a marketing intern to explore digital social media methods to connect with the public in order to promote and raise awareness of the parks.
- Bicycle/Pedestrian Trail and Route Improvement
 - Update the *Jefferson County Bicycle Plan*.
 - Continue development of the Glacial River Trail in Jefferson County and adjacent Counties.
 - Position the Parks Department to apply for upcoming grant cycles to implement the Watertown-Oconomowoc (Interurban Line), Watertown to Waterloo, and Waterloo to Lake Mills linking bicycle/pedestrian trail projects.
 - Work with the Jefferson County Highway Department to improve on-road County Bicycle Routes when improving roadways.
 - Continue to work with the City of Waterloo to incorporate the Waterloo Regional Trailhead facility into the Garman Nature Preserve and trails linking Waterloo to Lake Mills and Watertown.
 - Connect the Glacial Drumlin State Trail to the Jefferson County Dog Park and Aztalan State Park where facilities and activities are available.
 - Work with the Village of Cambridge, Dane County, the Jefferson County Highway Department and others to coordinate bicycle route improvement and implementation of the Cambridge Connector Trail from the Village of Cambridge to the Glacial Drumlin Trail.
 - Create destination points, rest areas, and side trips to other activities along the bicycle/pedestrian trails.
 - Encourage cities and villages to incorporate bicycle routes to County Parks into municipal land use and bicycle/pedestrian plans.

- Continue to improve the Jefferson County Dog Park, the most used park in the system, with the assistance of a Dog Park Friends group and a volunteer coordinator. Consider acquisition of additional land for a dog park in the Fort Atkinson/Whitewater area.
- Appropriately placed and sized park pavilions accommodate outdoor, sheltered, or indoor gatherings.
 - Electricity, running water, and customer comfort features are provided at shelters.
 - Picnic areas include playgrounds. Where it is complementary to the park, playgrounds may be made of natural materials and/or feature nature themes.
 - Explore the addition of a four-season facility at Korth County Park.
 - Add active play features where appropriate, such as workout equipment along trails and games such as horseshoes and corn hole, which complement family gatherings.
 - Explore wireless technology for security cameras at select parks.
 - Add wireless access points in parks where appropriate.
 - Consider Park-sponsored public events such as Brew With a View at other parks.
- Restore and improve historic sites.
 - Continue to follow maintenance plans for the Native American Mounds at Garman Nature Preserve and Indian Mounds and Dorothy Carnes County Parks.
 - Add interpretive signs at the Garman Nature Preserve and Indian Mounds and Dorothy Carnes County Parks to educate the public about the significance and history of Native American Mounds.
 - Consider organizing field trips, summer camps, and cultural and historical educational experiences for all ages.
- Improve water access.
 - Enhance the Glacial Heritage Area Water Trail System (canoe and kayak trails) on suitable waterways with launches, rest stop areas, paddle-in camping, and informational kiosks.
 - Work with the Friends of the Glacial Heritage Area to improve paddling access on smaller rivers and tributaries.
 - Work with local paddling businesses to rent kayaks and canoes in convenient places.
 - Maintain and improve motorized boat landings.

Acquisition Strategies

Jefferson County has been acquiring park land that protects important natural and scenic areas and is appropriate for public use from willing sellers. Jefferson County's potential acquisition areas are documented in the *Glacial Heritage Area Plan*. Specific sites, acreage, and possible acquisition boundaries are detailed in that plan.

New Land Acquisition Priorities

The following seven properties are proposed as conservation parks if the land becomes available for purchase from willing sellers and a price can be agreed upon. Since the 2013 comprehensive plan, the Cold Spring Drumlin property has been sold for private development.

- **Holzheuter Farm Park:** This scenic property has been purchased by the WDNR as a State Park for mountain bike and trail use and will be managed in partnership with Jefferson County. Purchase of one inholding within the property may be pursued.

- **Cushman Mills:** Drumlins meet the Bark River on the Cushman Farm. This site has spectacular views, oak-hickory and maple-basswood forest, several historic pioneer sites, and canoe/kayak potential.
- **Oakland Highlands:** This hilltop features a large wooded area on a glacial moraine with spectacular views of Lake Koshkonong and the surrounding area, oak-hickory woods, remnant prairie, and a blue heron rookery.
- **Red Cedar Lake:** One of the most pristine lakes in southeastern Wisconsin and a State Natural Area with several rare plant communities.
- **North Shore Moraine:** An area of hilly topography, woods, agricultural land, and wetlands overlooking Rock Lake.
- **Hope Lake:** An undeveloped fishing lake with a high quality tamarack bog. The bog has been purchased by the Department of Natural Resources.
- **Scuppernong Valley:** Covering nearly a whole section (640 acres), this property features remnant prairie, woodlands, high quality wetlands, and wildlife.

Park and Trail Expansion Priorities

If land comes up for sale, pursue acquisition of property adjacent or near to existing parks for possible expansion, as identified in park master plans and/or the *Glacial Heritage Area Plan*.

Expansion Priorities – expansion boundaries are identified in the Glacial Heritage Area Plan

- Dorothy Carnes County Park
- Korth County Park
- Dr. J. S. Garman Nature Preserve

Corridor Priorities

- Waterloo to Watertown.
- Waterloo to Lake Mills via McKay Nursery land and along County Rd O to Rock Lake Rd.
- Old Interurban Line (WE Energies Corridor) from Watertown to Ixonia and Oconomowoc. New parking areas may be pursued.

Water Access Acquisition Priorities

- A *Glacial Heritage Area Watertrails River-Based Campground Assessment* was performed. The Watertrails Committee scouted many potential paddle-in camping locations. The following three areas in Jefferson County were chosen as priority areas:
 - Hahn’s Lake area on the Rock River near Grellton
 - Aztalan State Park on the Crawfish River
 - Cushman Mill on the Bark River
- River Corridors identified in the *Glacial Heritage Area Plan* are high quality habitat blocks in riparian zones. Acquisition and protection is recommended in the following three corridors:
 - Allen Creek Conservation Area/Allen Creek Wetland State Natural Area south of Fort Atkinson.
 - Lower Bark River Conservation Area just east of Fort Atkinson.
 - Lower Koshkonong Creek Conservation Area just north of Lake Koshkonong

- Acquisition for water access, riparian area protection, and wetland protection is also desirable along the following waterbodies if land becomes available:
 - Rose Lake
 - Rock Lake and Marsh Lake near Lake Mills
 - Hope Lake
 - Red Cedar Lake
 - Crawfish River
 - Rock River
 - Bark River
 - Allen Creek
 - Lower Koshkonong Creek

Conservation Easement Acquisition Strategies

Conservation easements can expand the footprint of County parks by permanently protecting farmland and natural areas adjacent to parks by either fee easements or donated easements. Easements can buffer parks from development in the long term and also stabilize the loss of farmland and natural areas. Easements can be more cost effective and also provide landowners with a way to realize capital without selling the land. Land owners may receive a tax deduction for a donated easement.

- Institute a purchase or donation of conservation easements program in the Parks Department and work with the Jefferson County Farmland Conservation Easement Program, WDNR, GHA, NRCS, non-profit conservation and trail organizations, and private entities to:
 - Buffer parks and protect environmental corridors.
 - Create multi-purpose trail corridors.
 - Retain and enhance rural character.
 - Separate urban service areas to retain their unique identity and distinctive community character.
 - Protect critical groundwater infiltration and aquifer replenishment areas.
 - Protect groundwater quality.
 - Explore the mutual benefits of conservation easements with farmers and landowners.
- Consider multiple funding sources for easement purchases such as County, state and federal funds, non-profit conservation organizations, zero-coupon bonding, conservation referendums, and others.
- Work with the WDNR and farmland owners to promote the WDNR voluntary access program for hunting.

Departmental Management Strategies

Departmental management and staffing are important for efficient day to day maintenance and reaching long term goals. Involving all staff in planning and decisions leads to good moral, problem-solving, buy-in on long-term visions and goals, and creativity.

- The Parks Committee and Operations Staff interact and work collaboratively to design, plan, and implement projects in response to an annual plan of work and capital program.
- Staff and community members are continually empowered to participate in park planning and improvement projects.

- The Parks Department collaborates with other County Departments in sharing equipment and resources to accomplish maintenance and construction tasks in a timely manner.
- Regular education, seminars, and safety training are offered to the Parks Committee and all levels of Staff.
- Staff training sessions are held on vegetative management, removal of invasive species, and controlled burns.
- Full-time parks staff positions and a volunteer coordinator position are returned to previous levels.
- Create a Naturalist position to assist with natural areas management and public education through park sponsored classes and nature walks.
- Follow a Capital Improvement Plan that prioritizes new facilities development and seeks innovative funding sources. Periodically review the capital improvement plan.

Partnership and Fund-Raising Strategies

Throughout the years the Jefferson County Parks Department has pursued good relationships with donors, local foundations, and government agencies for funding, donations, and grants. The Department seeks to develop a fundraising plan with donor directed funds and a general endowment that grow over time for acquisition, capital projects and maintenance. The Department seeks to partner with local hospitals and the medical community to advance community health. The Department also partners with local businesses to conduct activities in the parks.

- Jefferson County enters into cooperative agreements with the Wisconsin Department of Natural Resources for mutual benefit.
- Jefferson County partners with non-profit conservation organizations, community organizations and agencies, the private sector, and Friends groups on park initiatives.
- Jefferson County coordinates park initiatives with other jurisdictions to limit unnecessary duplication.
- Jefferson County partners with the health and medical field to provide exercise and mental health opportunities to benefit our citizens. The Department partners with health care providers in the media and through recreational events to communicate how an active outdoor lifestyle reduces health care costs for businesses and government.
- Jefferson County Parks maintains, strengthens, and develops relationships and partnerships with non-profit conservation organizations to obtain state, federal, and local funding.
- Strong partnerships are formed with businesses that believe in the link between parks and trails and their economic success. Current partnerships include TREK, Fort Health Care, Standard Process, 2 Rivers Bicycle & Outdoors, Tyrannena Brewery, Crave Brothers Farm, Greater Watertown Health Foundation, and Sport and Spine.
- The Parks Department continues to engage University of Wisconsin and other college and university students and professors in research projects and internships.

- Jefferson County Parks continues the successful approaches that have been used to obtain private, state, and federal grants.
- Donations are respectfully and sensitively solicited from the private sector for donor-advised funds to be used for park acquisition and development.
- A formal gift-giving program, called the Endowment Fund, collects and invests funds for park acquisition, maintenance, and park development.
- Jefferson County seeks corporate contributions to the Endowment Fund and corporate support for special projects and programs.
- Jefferson County investigates new park revenue sources such as impact fees and naming rights.

Marketing Strategies


The Jefferson County Parks Department seeks to advance their marketing reach and plan, within and outside of Jefferson County. Located between Milwaukee and Madison, the unique parks, trails, and experiences appeal to a wide range of people seeking outdoor recreations whether that is hiking, boating, bicycling, dog walking, or visiting historic sites.

- Jefferson County Parks Department initiatives, activities, and the benefits they provide are communicated through a County Board communications plan, a Department web site, educational articles, social media, Courthouse displays, the County’s Speaker’s Bureau, newspaper articles, radio and TV spots, advertising, and promotional articles such as tee shirts.
- A new “poster plan” summarizes the *Jefferson County Parks, Recreation, and Open Space Plan* in electronic and display copies to further motivate implementation and understanding.
- Develop a regular “This Is Your Parks” newsletter that informs about the parks and activities.
- Jefferson County Parks and the Glacial Heritage Area are promoted state-wide and nation-wide.
- Attractive and distinctive signage directs citizens to parks and within parks, along bike and walking trails and routes, and to water trails. Signage along city and village bicycle routes is coordinated with the Jefferson County Parks Department to help direct users to parks and points of interest along the routes and trails.
- Use mobile applications and maps to engage park users.
- Digitize the *Jefferson County Park, Recreation and Open Space Plan* with links to pages and interactive maps for ease of use.
- Update the Department website to be user friendly.
- Employ marketing interns to create social media park promotion campaigns.

Capital Improvement Plan

Year	Project Location	Project Description	Cost	Funding Source
2020	Glacial River Trail	Repair	\$ 30,000.00	50/50 Grant Levy
2020	Carnes West	ADA Trail	\$ 15,000.00	50/50 Grant Carrol Liddle
2020	Dog Park	Dividing Fence Upgrad	\$ 22,000.00	Revenue
2020	Interurban	Engineering/Design KL	\$ 120,863.50	Fundbalance
2020	Garman NP	Interp Project	\$ 70,000.00	Endowment
2020	Carnes East	Gate Operator	\$ 20,000.00	Fundbalance
2020	Crawfish River	NAWCA -DU Restoration	\$ 10,000.00	Grants 100%
2020	HWY E	Joint PiTo Project	\$ 15,000.00	Grants 100%
			\$ 302,863.50	
Year	Project Location	Project Description	Cost	Funding Source
2021	Dog Park	Update Entrance Area 2 & 3	\$ 35,000.00	Revenue
2021	Holzhueter SP	Parking Lot	\$ 10,000.00	Fundbalance GHA
2021	Cappies	Replace Shelter Roof	\$ 5,000.00	DNR - Fundbalance/Donations
2021	Interurban	KL Engineering	\$ 49,868.80	Fundbalance
2021	Garman	Restoration/Forestry	\$ 28,000.00	Endowment
2021	Korth Park	Shelter Curtains	\$20,000.00	Levy
2022	Korth Park	Playground Upgrades	\$15,000.00	BWAV/LM Community Foundation
2021	Carlin-Weld	Add 9-Hole Disc Golf Course	\$10,000.00	\$5,000.00 Donations/In-Kind, \$5,000.00 County
2021	Carlin-Weld	Gate Operator Replacement	\$5,000.00	Levy/Fund balance 12803
2021	Flood Mitigation	Utiliation and management Plan	\$20,000.00	Fund Balance
			\$ 197,868.80	
Year	Project Location	Project Description	Cost	Funding Source
2022	Interurban	Phase II Trail	\$ 2,572,871.66	TAP Grant, Fundbalance (Busget Estimate for
2022	Interurban	KL Engineering - Any caryforward costs		Fundbalance
2022	Burnt Village	Launch Improvement	\$ 7,000.00	50/50 Grant and Levy
2022	Dog Park	Electric, Lights, Cameras	\$ 36,000.00	Revenue
2022	Garman NP	Restoration	\$ 28,000.00	Endowment
2022	Korth park	Gate Operator Replacement	\$5,000.00	Levy
			\$ 2,648,871.66	
Year	Project Location	Project Description	Cost	Funding Source
2023	Interurban Phase 3	Engineering	\$ 40,000.00	Donations, Grants
2023	Kanow	Launch Improvement/ADA	\$ 10,000.00	50/50 Grant: Donations
2023	Carnes East	Permanent Vault Restroom	\$ 24,000.00	Levy
2023	Carnes West	Gate Operator Replacement	\$5,000.00	Operating Reserve
2023	Dog Park	Fence Replacement and Upgrade	\$30,000.00	Revenue
2023	Garman	Restoration	\$ 28,000.00	Endowment
			\$ 137,000.00	
Year	Project Location	Project Description	Cost	Funding Source
2024	Interurban	Engineering	\$ 50,000.00	
2024	Garman	Restoration	\$ 28,000.00	Endowment
2024	Upper Rock	Gate Operator Replacement	\$5,000.00	Levy
2024	Dog Park	Fence Replcement and Upgrade	\$ 30,000.00	Revenue
2024	Welcome Travelers	Re-pave Parkinglot	\$ 25,000.00	Levy
			\$ 138,000.00	
Year	Project Location	Project Description	Cost	Funding Source
2025	Kanow Park	Gate Operator Replacement	\$ 5,000.00	Levy
2025	Interurban	Phase III - Bridge/Engineering	\$ 550,000.00	Grants/Donations/Levy
2025	Interurban	Phase I - Paving	\$175,000.00	Grants/Donations/Levy
			\$ 730,000.00	

Jefferson County Parks, Shelter Amenities 2020

 Park Name	Address	Picnic Tables	# Trash Cans	Restrooms	# Recycling Cans	Play Ground Equip.	# Grills	Electrical Outlets	Water Pump	Miles of Trails
Carlin-Weld	N1841 County Z Palmyra WI, 53156	16	6	Yes	6	Yes	2	4	1	1.5
Cold Spring Creamery	N1501 County N Fort Atkinson, WI 53538	3	1	Yes	1	Yes	1	0	1	0
Cappies Landing	N8625 Jefferson Road Watertown, WI 53094	4	2	Yes	2	No	1	0	1	0
Dorothy Carnes	N3220 Radloff Lane Fort Atkinson, WI 53538	14	5	Yes	5	Yes	1	0	1	10
Garman NP	701 Fox Lane Waterloo, WI 53594	3	2	Yes	2	No	1	0	1	1.5
Kanow	N8248 Rock River Road Ixonia, WI 53036	14	6	Yes	6	Yes	3	0	1	0
Korth	W8390 Korth Lane Lake Mills, WI 53551	18	7	Yes	7	Yes	2	32	1	3.5
Korth, Elm Point	W8282 Elm Point Rd Lake Mills, WI 53551	9	6	Yes	4	No	1	4	1	0
Pohlman	N4809 Duck Creek Road Helenville, WI 53137	3	2	Yes	2	Yes	1	0	1	0.25
Rock Lake, Lower	W8050 Park Lane Road Lake Mills, WI 53551	14	6	Yes	5	Yes	5	2	1	0.75
Rock Lake, Upper	N6999 Rock Lake Road Lake Mills, WI 53551	8	3	Yes	3	Yes	1	0	1	0.40
Rock River	W5281 County B Johnson Creek, WI 53038	4	2	Yes	2	No	1	0	1	0
Rome Pond	W1637 County F Sullivan, WI 53178	6	1	Yes	1	No	1	0	1	0
Welcome Travelers	N482 County D Whitewater, WI 53190	7	4	Yes	4	Yes	1	0	1	0

Needs Assessment

Existing Park Facilities and Proposed Improvements

The Jefferson County Parks system covers 22 parks and 1,180 acres throughout the County, over 19 miles of hiking trails, 35 miles of on and off-road bicycle/pedestrian trails on the Glacial River Trail and Interurban Trail, and 199 miles of snowmobile trails. Bicycle routes have been designated on lightly traveled road throughout the County.

Parks range in size from small waysides to 514 acre Dorothy Carnes County Park and Rose Lake State Natural Area. Historic elements such as Native American Indian Mounds, an original log cabin, and original barns have been preserved.

The system offers outdoor activities, many of which are nature-based. Most of the parks provide picnicking, hiking, playgrounds, nature emersion, relaxation, and natural areas restoration. Bicycling, mountain biking, boating, fishing, disc golf, and a large dog park add to the variety of activities.

The Parks Department operates out of an office in the Jefferson County Courthouse and the Parks Maintenance Shop on Industrial Avenue. The Department take pride in excellent upkeep of the parks and facilities, improvement of natural area, and keeping communication open with park visitors.



Over the years a park design vocabulary has been developed giving the system a unified look. Shelters are mostly wood with heavy timbers and green or brown roofs. Some shelters incorporate native fieldstone and barn boards. Restrooms and sign boards complement the shelters. A split-rail fence design developed by the Parks Department defines and protects areas. Playgrounds are designed with safety as a primary goal and blend in with the surrounding scenery.

Needs Assessment

The needs assessment for the Jefferson County Parks looks at several parameters that will guide the future of the parks system as it serves the citizens of Jefferson County. As the population grows and changes and new recreation trends emerge, the parks department may want to add parks in certain areas of the county and offer new recreational activities and some parks.

The Needs Assessment involves four areas of consideration:

1. Classification of the parks to assess how parks, facilities, and recreational activities are serving a diverse population. The National Recreation and Park Association's Park, Open Space, and Pathway Classifications are applied to Jefferson County's parks and trails beginning on page 20.
2. Assessing population trends and demographics and the level of service that the parks provide, starting on page 38.

3. Public participation and input into the planning process, see page 45.
4. Consideration of the WDNR *Statewide Comprehensive Outdoor Recreation Plan* and how the recommendations of the 2019 plan apply to the Jefferson County Parks System. See page 52.

Park Classifications

As part of a needs assessment, the National Recreation and Park Association (NRPA) Park, Open Space, and Pathway Classifications provide a guide for facilities, size criteria, and level of service standards. Providing parks in several different classifications creates variety and flexibility in a park system.

The NRPA classifications apply primarily to city and municipal park departments with active recreation such as ball fields, team play, swimming pools and skateboard parks. Jefferson County Parks provide outdoor nature-based recreation, trails, and activities in rural areas. The standards recommend that county parks should be a minimum of 40 acres.

Jefferson County's Parks and Trails are listed in the following section with existing facilities, improvements since 2013 and proposed improvements. The parks and trails are categorized by the NRPA classifications from smallest to largest. A trail needs assessment follows the park section.

Very Small Parks

According to the NRPA, very small parks address limited, isolated, or unique recreational needs and are between 2500 sq. ft. and 5 acres in size.

Blackhawk Island Fishing Pier

Blackhawk Island Road, Fort Atkinson, 2 acres

Blackhawk Island is a flood-prone area along the Rock River. Jefferson County has been acquiring unlivable properties for several years. An ADA-complaint fishing pier and parking lot were built on land adjacent to the Island Grill. Picnic tables and a seasonal restroom are available.

Accomplishments since 2013

- ADA fishing pier
- Seasonal restroom
- Small parking lot
- Picnic area

Proposed Improvements 2020-2025

- Repair shorelines that are crumbling
- Periodic flooding precludes most new improvements



Burnt Village County Park

W9158 County Rd N, Fort Atkinson, 2 acres

Historically a Native American village was located at this site and later a Federal encampment during the Blackhawk War of 1832. Burnt Village Park is on CTH N at the bridge over the Bark River. The park is used as a wayside and fishing area. A boat ramp serves boats, canoes and kayaks. A seasonal restroom, a few picnic tables and a grill are available. Period flooding limits development to fishing and boat launch improvement.

Accomplishments since 2013

- Improved fishing access
- Added seasonal restroom

Proposed Improvements 2020-2025

- ADA fishing pier improvement, add suspended platform
- ADA kayak launch
- Periodic flooding prevents many improvements



Cold Spring Creamery County Park

N1501 County Rd N, Fort Atkinson, 0.787 acres

Cold Spring Creamery County Park is a small wayside adjacent to the hamlet of Cold Spring. The park is used for picnicking and has a flowing well. A historical marker commemorates the place where Abraham Lincoln's horse was stolen in 1832 while camping for the night on his way back to Illinois from the Blackhawk War. A shelter, swing set, restroom, and a Little Free Library are provided.

Accomplishments since 2013

- Updated restroom

Proposed Improvements 2020-2025

- Reset and regrade around restroom to improve drainage
- New park sign



Highway 16 Wayside

W802 STH 16, Ixonia, 4.4 Acres

The STH 16 Wayside is along the Rock River between Oconomowoc and Ixonia. Periodic flooding limits development. The wayside is used for picnics, family play, fishing, and canoe/kayak launching. A historic marker commemorates STH 16 as the first numbered highway in Wisconsin (Hwy 19 at that time).



Accomplishments since 2013

- Acquisition
- Planted new trees to replace failing trees

Proposed Improvements 2020-2025

- Improved gate for closures
- Rehabilitate restrooms
- ADA kayak/canoe launch

Joy County Park

N6881 County Rd F, Oconomowoc, 1 acre

Joy Park, just north of the I-94 and CTH F exit, is a small wayside park on Spence Lake. Picnicking, fishing and bird watching are activities.

Accomplishments since 2013

- Continued maintenance

Proposed Improvements 2020-2025

- Plant pine plantation on grassy area to reduce mowing
- Gravel access trail to Spence Lake



Rock River County Park

W5281 County Rd B, Johnson Creek, 4 acres

Rock River Park is on CTH B between Johnson Creek and Lake Mills in a rural setting on the Rock River. The park offers picnicking, boating, and fishing. There is a flowing well and the shoreline has recently been improved with native plants. Flooding can lead to periodic closures.

Accomplishments since 2013

- Pier added to boat launch
- Natural shoreline planting
- Kiosk with maps and park rules
- Improved gate for nightly closures.

Proposed Improvements 2020-2025

- ADA compliant boat launch and fishing pier
- Fire ring and seating
- Permanent seating near shoreline
- Periodic flooding closes the park and limits improvements



Smaller Parks

Smaller parks serve recreational and social needs of a smaller geographic service area. Five acres is considered the minimum size and between 7 and 10 acres is optimal. These parks provide typical neighborhood recreation or play activities. Jefferson County would like to transfer the ownership of the two parks, Altpeter and Welcome Travelers, to the surrounding jurisdictions because they serve as neighborhood parks.

Altpeter County Park

W7786 Lamp Road, Fort Atkinson, 4 acres

Altpeter County Park is in the North Shore area of Lake Koshkonong, a small neighborhood tucked along the lake, west of Fort Atkinson. The park is about a block away from the water and features a playground, 2 picnic tables and green space for play. The Parks Department plows adjacent land in the winter for ice fishing parking. Transferring the park to the Town of Sumner is a possibility. Periodic flooding limits improvements to the park.



Accomplishments since 2013

- No changes other than routine maintenance.
- Periodic flooding prevents any improvements.
- Parks Department plows The Lamp property for ice fishing parking.

Proposed Improvements 2020-2025

- No improvement plans because of periodic flooding
- Transfer ownership to the Town of Sumner

Welcome Travelers Park

N482 County Rd D, Whitewater, 8 acres

Welcome Travelers Park is at the intersection of CTH D and STH 59, just north of Whitewater. The park features a playground, shelter, tables, grills and water. It has greenspace for play and games.

Accomplishments since 2013

- Electrical outlets added to shelter
- Added a new playground

Proposed Improvements 2020-2025

- Work with the City of Whitewater to transfer the park to their jurisdiction
- Repave parking lot
- Regrade to eliminate runoff that floods the shelter
- Add corn hole, horseshoes or other games



Community Parks

This classification does not directly apply to Jefferson County Parks as most parks are located in rural areas, not in communities. The parks listed below may be thought of as community parks by the nearby residents and meet other criteria in this classification. Community Parks provide for broader recreational needs and preserve unique landscapes and open space. They usually serve a regional geographic service area. Community parks are usually between 20 and 50 acres in size.

Pohlmann County Park

N4809 Duck Creek Road, Helenville, 10 acres

Pohlmann County Park is on USH 18 between Helenville and Jefferson and just south of the Glacial Drumlin State Trail. The park has an old silo that has become a landmark in the area. A new playground, shelter, picnic tables, grills, water hydrant, and walking trails complete the park. The silo and old stone wall are remnants from the farm that once stood here. The park is a popular rest stop along the Glacial Drumlin State Trail.



Accomplishments since 2013

- New shelter
- New playground
- Kiosk with maps and park rules
- Pohlmann Family history sign moved to more prominent place

Proposed Improvements 2020-2025

- Restructure and pave parking lot if possible, the silo is problematic to changing parking lot
- Maintain and repair the silo if necessary
- Improve pine tree trail and add wayfinding signs
- Install sign directing users to Glacial Drumlin Trail



Rock Lake County Park

Upper N6999 Rock Lake Road, Lake Mills

Lower W8050 Park Lane Road, Lake Mills, 23 acres in total

Rock Lake Park is on CTH B west of Lake Mills on the north side of Rock Lake. The Park is adjacent to the City of Lake Mills and in a semi-urban area, appealing to local residents. The northern part of the park is on Rock Lake Rd on a steep hill overlooking the lake and features a shelter, water, picnic tables, grills and a nature trail.

The southern part of the park on CTH B features a busy boat ramp and seasonal pier, large boat trailer parking lot, a shelter, tables, grills, restrooms, and a playground. Fishing, boating, and picnicking are activities.

Accomplishments since 2013

- New sign on County Road B
- New boat launch sign
- New sign on Rock Lake Road for Upper Rock Lake Park

Proposed Improvements 2020-2025

- ADA compliant trail from the parking lot to the existing sidewalk in Lower Rock Lake Park
- Tables and roofed seating along the park side of the road along Rock Lake
- Replace restrooms with new vault toilets
- Add corn hole, horseshoes, volleyball, gym equipment or other active sports to the Lower Park
- Expand trails and add a mountain bike loop to Upper Rock Lake Park
- New kiosks with maps, park rules and educational materials
- Forestry plan to remove invasive species and encroachment at Upper Rock Lake Park
- Improve drainage of Upper Rock Lake Park
- Update automatic gate operators with new operator boards and arms



Rome Pond County Park

N1637 County Rd F, Sullivan, 12 acres

Rome Pond County Park is along the Bark River on CTH F between Sullivan and Rome, adjacent to the Rome Pond State Natural Area and the unincorporated hamlet of Rome. Jefferson County leases the park from the WDNR.

A boat ramp is the main feature along with a shelter, tables, restrooms, grills and water pump. In 2019 the WDNR installed a gravel trail into the Wildlife Area that circles around to Rome-Oakhill Road south of Rome.

Accomplishments since 2013

- Kiosk with maps and park rules
- Maintained boat launch

Proposed Improvements 2020-2025

- Work with WDNR to improve boat launch.
- Land is leased from WDNR and precludes other development



Special Use Parks and Facilities

Special use parks are oriented to a single purpose, unique use or a significant historic or cultural attribute.

Cappie's Landing

N8625 Jefferson Rd, Watertown, 6.31 acres

Cappie's Landing was previously a sportsman's club property along the Rock River south of Watertown. Jefferson County maintains a boat ramp, parking, and primitive walk or boat-in camp sites. A shelter, picnic tables, a grill, and a restroom are available at the partially wooded, riverside park.

Accomplishments since 2013

- Acquisition of property
- Two primitive walk-in camp sites
- Restroom
- Motorized and non-motorized boat ramp
- Picnic tables
- Existing shelter maintained
- Parking
- Planted new trees



Proposed Improvements 2020-2025

Work with WDNR on all of the following improvements:

- Replace shelter roof
- Remove retention walls along Rock River
- Install native plants in a shoreline restoration
- Install improved gates for closures
- Improve parking lot surface and research ways to raise the parking lot surface to increase accessibility during high water events

Flood Mitigation Properties

Jefferson County has been acquiring flood mitigation properties primarily along the Rock River through the federal Flood Mitigation Acquisition Program. These are homes and businesses that flood on a regular basis. All properties are acquired from voluntary sellers. Once acquired, the buildings are removed and the property is returned to a natural state. The Office of Emergency Management handles all aspects of the acquisitions; the Parks Department is responsible for the maintenance and upkeep of the property once it becomes County Property. These properties may provide recreational opportunities that are allowed by the purchase grant conditions. The properties will be managed to ensure that the natural resources of the floodplain and/or wetlands are maintained. Restoration opportunities could include trails, greenways, archery range(s), disc golf, fishing, gardens and more. If sufficient adjacent acreage is assembled, hunting and trapping will be considered. The Blackhawk Island Fishing Pier is one such property.

Priority Property Acquisition

1. State Highway 106, block of parcels/Fort Atkinson Rock River Park (Parcel ID: 016-0514-0541-00)
2. Rock River Road/Bark River (Parcel ID: 016-0514-0313-011)
3. Rock River Road (Parcel ID: 016-0514-0314-000)

Glacial River Mountain Bike Trails

County Road W, Jefferson, 20.2 acres

Local citizens and volunteers masterminded the Glacial River Mountain Bike Trails. Located on County-owned land west of Jefferson and along the Glacial River Trail, access is from the trail, Annex Rd, or a parking lot on CTH W. 2.4 miles of trails have been constructed along with obstacles. Future plans call for a water station, restrooms, and more obstacles.

Accomplishments since 2013

- Mountain bike trails for a variety of skill levels
- Mountain bike obstacles
- Entrance kiosks and repair station
- Access to Glacial Drumlin Trail
- Access to parking across the road.
- Small parking lot on north end of trails



Proposed Improvements 2020-2025

- Expand trail system by 1 mile
- Add trail obstacles
- Add restroom
- Add water station
- Add skills course and obstacles near parking area.
- Involve volunteers in trail maintenance

Indian Mounds County Park

W7561 Koshkonong Mounds Road, Fort Atkinson, 6.9 acres

Indian Mounds County Park protects eleven visible Native American effigy mounds. 1.9 acres with mounds across the road were recently added to the park. A trail takes visitors around the mounds and through a wooded area with the remnants of a Native American trail. A plan to protect the integrity and sensitive nature of the mounds was developed in 2004 by Jay Toth, tribal archaeologist with the Ho Chunk Nation and Leslie Eisenburg, Burial Sites Program coordinator at the Wisconsin Historical Society.

Accomplishments since 2013

- 1.9 acres of land with Native American mounds added across the road
- Improved parking lot
- Improved woodland and Native American mound maintenance
- Interpretive plan for educational signs completed

Proposed Improvements 2020-2025

- Forestry prescription plan for new land to maintain integrity of the mounds
- Limit trail access to new land



- Donation box
- Continue to add interpretive panels
- Continue vegetative management to maintain integrity of the mounds and woodlands
- Replace wooden trail signs and fences
- Install area of native forbs and grasses near entrance to the park

Jefferson County Dog Park and Terri Tinsley Dog Exercise Area

W5098 Canine Drive, Johnson Creek, 109 acres

The Dog Park is located along STH 26 between Jefferson and Johnson Creek with easy access from I-94. The park opened in 2003 and has 59 fenced acres for dog walking off-leash. The remainder of the park is wooded and wetland. Each of four separate dog areas has double gated entrances and restrooms. Two shelters, benches, and water hydrants for people and dogs are available. The Dog Park is the most popular park in the system with tag purchases increasing every year, 1800 annual tags were sold in 2019. Improvements, amenities, and events are added each year. A seasonal park attendant supervises usage, performs maintenance, and removes invasive species.

Accomplishments since 2013

- 1800 annual tags issued in 2019
- 300 ft. boardwalk in wet area
- Statues and obstacle course added
- Park road paved
- Trails in wooded area



Proposed Improvements 2020-2025

- Improve entrances in Areas 2 and 3
- Finish paving road and parking lots
- Add gravel to trails
- Add permanent, roofed seating along trails – donation campaign
- On-going prairie planting and vegetative management
- Dog cooling station
- Credit card machine for park fees
- A Dog Park Ranger or second attendant is vital to management
- Pave road to shed and add pad for dumpster
- Security cameras at entrances
- Explore LED and solar lighting along some trails and in the parking lots
- Ongoing fence replacement and upgrades where needed.



Jefferson County Parks Maintenance Building

Industrial Drive, Jefferson

The Jefferson County Parks Maintenance Building was built in 2001. The 24,000 sq. ft. heated building houses the maintenance shop, a wood shop, indoor storage, breakroom, and office space.

Proposed Improvements 2020-2025

- Security fencing
- Additional spaces for materials storage including bunkers and possible covered storage of topsoil and landscape mulch
- Plan for additional responsibilities such as more snowplowing
- Landscaping around entrance and signs
- Update Parks sign in front of building



Conservation Parks

Conservation parks are natural resource areas set aside for preservation, remnant native landscapes, open space, and visual buffering. These parks are located where exceptional natural areas are found and are planned, in some cases, for expansion up to 400-600 acres serving the whole county and possibly a regional geographic service area. They typically provide picnicking, passive recreation, and multiple trail opportunities. These are the signature parks of the Jefferson County Parks System. See map on page 3.

Carlin-Weld County Park

N1841 County Rd Z, Palmyra, 78 Acres

Carlin-Weld County Park features the rolling topography of the Kettle Moraine, an upland prairie and oak planting, and a lowland pond with wooded wetlands. A large shelter, playground, restroom, 1.5 miles of trails, fishing pond, and a Frisbee golf course make the park popular for family gatherings and dog walking. The park is adjacent to a small subdivision and is used for local school sports.

Accomplishments since 2013

- Paved road and parking
- Installed kiosks with maps and park rules
- 9-hole Frisbee golf course
- Woodland restoration below the shelter
- Electrical outlets added to shelter



Proposed Improvements 2020-2025

- Boardwalk trail in marshy areas
- Paved sidewalk to shelter
- New restrooms
- Fishing pier or pond access
- Potential dog training or off leash area
- Add 9 holes of Frisbee golf for tournaments
- Replace gate operator system with new operator boards and drives arms

Crawfish River County Park

STH 18, Jefferson, 18 acres

Crawfish River County Park is located along the Crawfish River just west of Jefferson. The land was donated to Jefferson County by the Wisconsin Department of Transportation (WiDOT) after construction of the STH 26 Bypass created an orphan parcel. The Glacial River Trail passes on the west side of the

property. Public parking and access from USH 18 have not been negotiated with the WiDOT. Volunteers maintain trails. Seasonal flooding is a concern

Accomplishments since 2013

- Master Plan completed
- Trails maintained by volunteers
- Connected to Glacial River Bicycle/Pedestrian Trail and added a sign to the park
- Small picnic area



Proposed Improvements 2020-2025

- Work with WiDOT to provide access to the park from USH 18
- Prairie, woodland and wetland restoration
- Add recreational features such as benches, picnic tables, and picnic areas adjacent to trails
- Create Put In Take Out (PiTo) access to the Crawfish River
- Lack of access from USH 18 and periodic flooding limit development

Dorothy Carnes County Park and Rose Lake State Natural Area

N3220 Radloff Lane, Fort Atkinson, 514 acres

Dorothy Carnes County Park is located just west of Fort Atkinson and has access from Radloff Lane, Hoard Road, Banker Road, and Kemmeter Road. The park surrounds pristine Rose Lake Marsh and 480 acres are within the Rose Lake State Natural Area designation. The landscape features rolling hills, woodlands, wetlands, prairie and savanna restorations, a wetland scrape, and premier waterfowl habitat. White pelicans, black terns, and other uncommon species visit the marsh.

The park has about 9 miles of hiking and cross-country skiing trails, and opportunities for nature study, bird watching, picnicking, and rustic walk-in camping with a restroom and hand pump. Controlled hunting is available by permit on the Kemmeter Road portion of the park. All dogs must be on-leash.



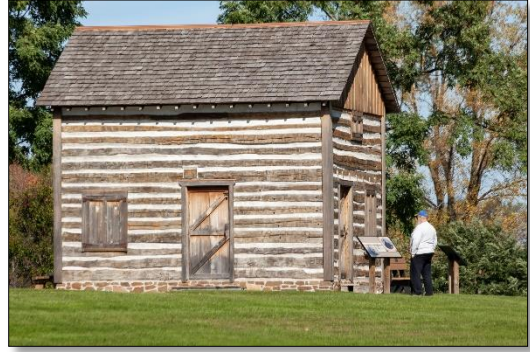
A log cabin built by the Mason Family has been restored on the eastern portion of the park and a new parking lot added. This land may have been the first owned by a woman in Wisconsin. Community gardens are available for rent. The existing barn and some of the outbuildings have been stabilized and will be repurposed.

The western portion of the park features the popular and award-winning Carol Liddle picnic pavilion, a playground, restrooms, trails, a marsh overlook, and a wildlife viewing blind.

The Friends of Rose Lake is an active volunteer group that leads bird walks and providing nature study materials. The Mason Jar Jamboree is an annual fall festival at the farmstead area of the park.

Accomplishments since 2013

- Trail plan implemented
- Mason Log Cabin rebuilt
- Unnecessary buildings in poor repair removed
- Interpretive signs added at Mason Log Cabin
- Museum pieces added to Mason Log Cabin
- New parking lot added at Mason Farm
- Paved trail from parking to overlook deck on west side of park
- Added marsh viewing blind on south side of park
- New ocular viewer at west side overlook
- Youth and ADA hunting provided at Kemmeter property
- Swing set added to west side of park
- Ongoing prairie and woodland restoration and maintenance



Proposed Improvements 2020-2025

- Add Marsh Magic Trail (gravel) on east side of park
- Secure storage for trail maintenance equipment on both sides of park
- Improve play area on west side of park
- Add wayfinding signs on Mason Farm
- Add Park directional signs on Banker Rd and/or USH 12 to the Mason Farm
- Revamp viewing blind to prevent squirrel damage
- Add permanent bathroom to Mason Farm
- Add automatic security gate to Mason Farm
- Update gate operator systems with new operator boards and drive arms
- Finish moving Hearty Gardens on Mason Farm
- Restoration and reutilization of Mason barn for classrooms (indoor and outdoor), interpretation, barn weddings, rentals, and storage
- Add a Rose Lake overlook deck on Mason Farm
- Emphasis on ADA hunting opportunities on Kemmeter, add youth and ADA accessible hunting blind
- Utilize funds from leasing Kemmeter crop land for improvements
- Dig reed canarygrass out of ditch behind farm buildings on Mason farm to improve drainage.
- Continue prairie, wetland and woodland restoration activities

Dr. J. S. Garman Nature Preserve

701 Fox Lane, Waterloo, 45 acres

The Garman Nature Preserve was donated to Jefferson County by Theo Garman in 2003. Five additional acres were recently acquired. Mrs. Garman would like the park to remain in its natural condition with minimal development. The park is a steep, wooded drumlin within the City of Waterloo. Twenty-two Native American mounds are found at the peak of the hill, far within the park. The yellow giant hyssop, a species that was on the Wisconsin threatened plants list, grows in the park.

Visitors use the park for hiking, picnicking and cross-country skiing. A plan to maintain the mounds was completed with the Ho-Chunk Nation. The Waterloo Regional Trailhead building was built adjacent to

the preserve to serve as a focal point of the Glacial Heritage Area and trail hub. The Garman Nature Preserve is located across the street from TREK Bicycle Corporation and is often used by its employees.

Accomplishments since 2013

- Interpretive plan for education signs completed
- Acquired 5 acres of adjacent steep and wooded land in 2015
- Access acquired to Waterloo Road
- Installation of some interpretive signs
- Native American mound maintenance
- Fox Lane entrance road paved
- Connections to Waterloo Regional Trailhead facility and bicycle/pedestrian trails
- Improvement of timber stand



Proposed Improvements 2020-2025

- Acquire adjacent property if it becomes available
- Install a more visible entrance sign at Fox Lane
- Improve and realign trails as needed
- Continue to improve timber stand
- Continue to monitor and maintain Native American mounds
- Continue to install interpretive signs

Holzhueter State Park

W7664 Island Road, Waterloo, 176.5 acres

This large, rural park between Waterloo and Watertown features uplands with beautiful views of the countryside, steep wooded hills, and wetlands. The park was purchased by the State of Wisconsin in 2009. Jefferson County will provide management through a Memorandum of Understanding at a future date. A Master Plan has been completed and needs State approval. The park currently has mowed trails. Extensive mountain biking trails are a long-range goal.

Accomplishments since 2013

- Master plan completed
- Mowed trails

Proposed Improvements 2020-2025

- Develop restoration and implementation plans for phased improvements to parking, prairies, woodlands and trail development
- Develop a forestry plan for the woodlands
- Maintain trails
- Work with WDNR to begin improvements



Kanow County Park

N8248 Rock River Road, Ixonia, 45 acres

Kanow Park is located on a bend of the Rock River about 1.5 miles east of Ixonia. The park has a large shelter and playground. Activities include fishing and a canoe/kayak launch. A portion of the park is wooded with ash, which are dying from emerald ash borer damage. Periodic flooding limits development of the park.

Accomplishments since 2013

- Kiosk with maps and park rules
- New playground
- Trails in woodlands eliminated, flooding precludes activities in low areas

Proposed Improvements 2020-2025

- Accessible kayak launch
- Shoreline restoration
- Permanent corn hole and horseshoe games
- Dead ash tree removal and replacement
- Update automatic gate operators with new operator boards and arms



Korth County Park

W8390 Korth Lane, Lake Mills, 89.5 acres

Korth Park, on Rock Lake west of Lake Mills, protects the water quality and fish habitat of the lake. A bicycle trail connects the park to the Glacial Drumlin Trail, which runs from Waukesha to Cottage Grove. A popular large shelter, parking lot, playground and restrooms are located on top of a hill with expansive views of the lake. In the summer, popular monthly concerts are held during Brew With a View. Community gardens are located along Elm Point Rd along with another shelter and parking lot. Wooded and prairie trails are well used. A sledding hill is offered in the winter.

Accomplishments since 2013

- Additional parking added
- Prairie, shoreline and woodland restorations and maintenance
- New playground
- Brew With A View evenings with music and food trucks extremely popular

Proposed Improvements 2020-2025

- Expand parking lots, parking is limited for large events.
- Permanent outdoor pit toilet or heated restroom during winter
- Pave Glacial Drumlin Connector Trail
- Improve playground with pour in place surface
- Add a fire pit and seating area
- Add exercise equipment along shoreline trail



- Add portable stage or risers for Brew With A View
- Add on-site storage for maintenance equipment
- Make community gardens more aesthetic, new fence, provide water
- Acquire land between Korth Lane and Elm Point if it becomes available
- Continue prairie, shoreline and woodland restorations and maintenance
- Update automatic gate operators with new operator boards and arms

Trail Classifications

The NPA provides pathway classification guideline, which are found at the end of this section for the Jefferson County Parks System.

Glacial River Bicycle/Pedestrian Trail

The 33.6 miles of the Glacial River Trail in Jefferson County runs on an abandoned railway easement from the Rock County line to Fort Atkinson. Off-road expansion was carried out by the City of Fort Atkinson and during the STH 26 bypass construction around Fort Atkinson and Jefferson. Between Jefferson and Johnson Creek the trail is primarily on lightly travelled roads and then is both on and off-road from Johnson Creek to Watertown.

Jefferson, Johnson Creek and Watertown have developed their own municipal bicycle routes. The total length of the trail from the Rock County Line to STH 60 in Dodge County is 55.8 miles. Future plans include water stations along the trail, tree planting for shade, information and map kiosks, and continued maintenance. Trail access points are as follows:



Glacial River Trail Parking on Farmco Lane

Farmco Lane, Fort Atkinson, 1 acre

Parking, water, a shaded kiosk, and a bicycle sculpture are found at this trail access point on the south side of Fort Atkinson

Accomplishments since 2013

- Signs, kiosk, bicycling sculpture

Proposed Improvements 2020-2025

- Add exercise stations along trail
- Maintain vegetation along trail
- Improve trail signage and maps to include “you are here” maps along the trail and mileage signs to destinations and features.

Glacial River Trail Parking at County Line

County Line Road, Fort Atkinson, 1 acre

The Trail is accessible from the intersection of Old Hwy 26 and County Line Rd. There is no parking.

Proposed Improvements 2020-2025

- Improve trail signage and maps to include “you are here” maps along the trail and mileage signs to destinations and features.
- Add water station
- Create budget and plan to replace Allen Creek Bridge

Glacial River Trail Parking on County Rd W

County Rd W, Jefferson, 1 acre

Parking is available near the intersection of CTH W and Annex Road on County-owned property.

Accomplishments since 2013

- Built on County-owned property to serve the Glacial River Trail and Mountain Bike Trails
- Entrance sign in parking area

Proposed Improvements 2020-2025

- Install Born Learning Trail on paved trail from CTH W parking lot back toward Jefferson
- Improve trail signage and maps to include “you are here” maps along the trail and mileage signs to destinations and features

Interurban Trail

Watertown to Oconomowoc, 10.96 miles proposed.

The Interurban Trail for bicycles and pedestrians will ultimately connect Watertown to Oconomowoc with 10.96 miles of off-road trail. From there connections will be made to the Lake Country Trail in Waukesha County and potentially Milwaukee and Lake Michigan. Phase 1 construction of 2 miles in Watertown is complete. The trail, on the right-of-way of an old electric railway, has been an community effort of dedicated volunteers and foundations.

Accomplishments since 2013

- Phase 1 complete, 2 miles, from the east side of Watertown at Humbolt Street to River Road
- Parking lot and Interurban Trail sign
- Bridge over the Rock River
- Fencing along trail

Proposed Improvements 2020-2025

- Pave Phase I of the Trail, about 2 miles
- Install Phase 2 from River Road east to County Road F, about 4 miles.



Snowmobile Trails

Jefferson County Parks has 199.2 miles of snowmobile trails and snowmobile clubs maintain 290 miles connecting all parts of the County and beyond. A bridge spanning the Crawfish River near Hubbleton was built to serve snowmobiles. The WDNR's Glacial Drumlin Trail also serves snowmobiles.



Pathway Classifications

The pathway classification is intended to encourage communities to plan for light transportation in a comprehensive manner. Planning in a system-wide manner, a path system could emerge that is tied to park, open space, and general land use/transportation system within the county, adjacent communities and regions.

Park Trails Park trails are multi-purpose trails within greenways, parks, and natural areas that focus on recreational value and harmony with nature. Trails can be Type I - separate/single-purpose hard-surfaced trails for pedestrians, bicyclists, and in-line skaters; Type II - Multi-purpose hard-surfaced trail for pedestrians, bicyclists, and in-line skaters; or Type III - Nature trails for pedestrians, hard or soft surface. Park trails are available at:

- Dorothy Carnes – Type III
- Korth – Type II and Type III
- Indian Mounds – Type III
- Carlin-Weld – Type III
- Rock Lake Park – Type III
- Dr. J.S. Garman Nature Preserve – Type III
- Jefferson County Dog Park (Bicentennial Park) – Type III
- Pohlmann – Type III

Connector Trails Connector trails are multi-purpose trails that provide safe travel for bicycles and pedestrians to and from parks and around the community.

Type I: Separate/single purpose hard-surfaced trails for pedestrians, bicyclists and in-line skaters located in an independent right-of-way.

- Glacial River Trail – 33.6 miles in Jefferson County, 55.8 miles total Glacial River Trail
- Glacial Drumlin State Trail – 52 miles

Type II Separate/single purpose hard-surfaced trails for pedestrians, bicyclists/in-line skaters within the road right-of-way.

- Jefferson County Inter-municipal Bicycle System and on-road bicycle routes.

On-Street Bikeways The *Jefferson County Bicycleway/Pedestrianway Plan* maps on-street bikeways within communities. Bikeways provide transportation and safely separate bicyclists from vehicular traffic as a bike route or bike lane.

Other Pathway Classifications

All-Terrain Bike Trails: Off-road trails for all terrain bikes (mountain bikes)

- Glacial River Mountain Bike Trails
- Potential mountain bike trails at Holzhueter State Park

Cross-Country Ski Trails: Trails for traditional and skate-style skiing are available at Dorothy Carnes, Korth, Carlin-Weld, and Garman Nature Preserve

Snowmobile Trails: Off-road County and local winter trails for snowmobiles are maintained by local snowmobile clubs and stretch for 199 miles

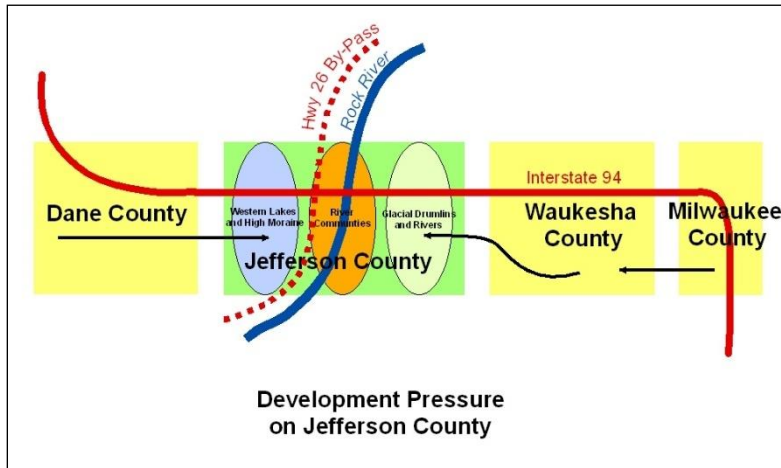
Equestrian Trails are developed for horseback riding. The Southern Unit of the Kettle Moraine State Forest provides equestrian trails

ATV Trails: Some towns (townships) in Jefferson County have marked ATV on-road designations

Needs Assessment

Demographics

Jefferson County is located in southeastern Wisconsin between the large metropolitan areas of Madison and Milwaukee/Waukesha. Interstate 94 crosses the northern part of the County from Milwaukee to Madison and Minneapolis/St Paul. Chicago residents with second homes and campers in Jefferson County add to the summer population.



Population Change

The population of Jefferson County in 2018, the latest year available, was 84,352, the 20th largest County in Wisconsin.

By 2040, the population is expected to grow to 100,300, an increase of 18.9%. In 2000 the population was 75,767. There were 32,866 households in 2018.

The Population Projection Chart, to the left, and the Population Projection Map 2018-2040 on page 39, show that the greatest population change by 2040 is expected to be in the Village of Johnson Creek along I-94, the City of Whitewater in southern Jefferson County, and the Town of Ixonia in the northeastern corner of the County. When considering the acquisition of additional parkland, these areas may be a priority. The Towns of Farmington, Cold Spring, and Sumner are expected to be stagnant or lose population.

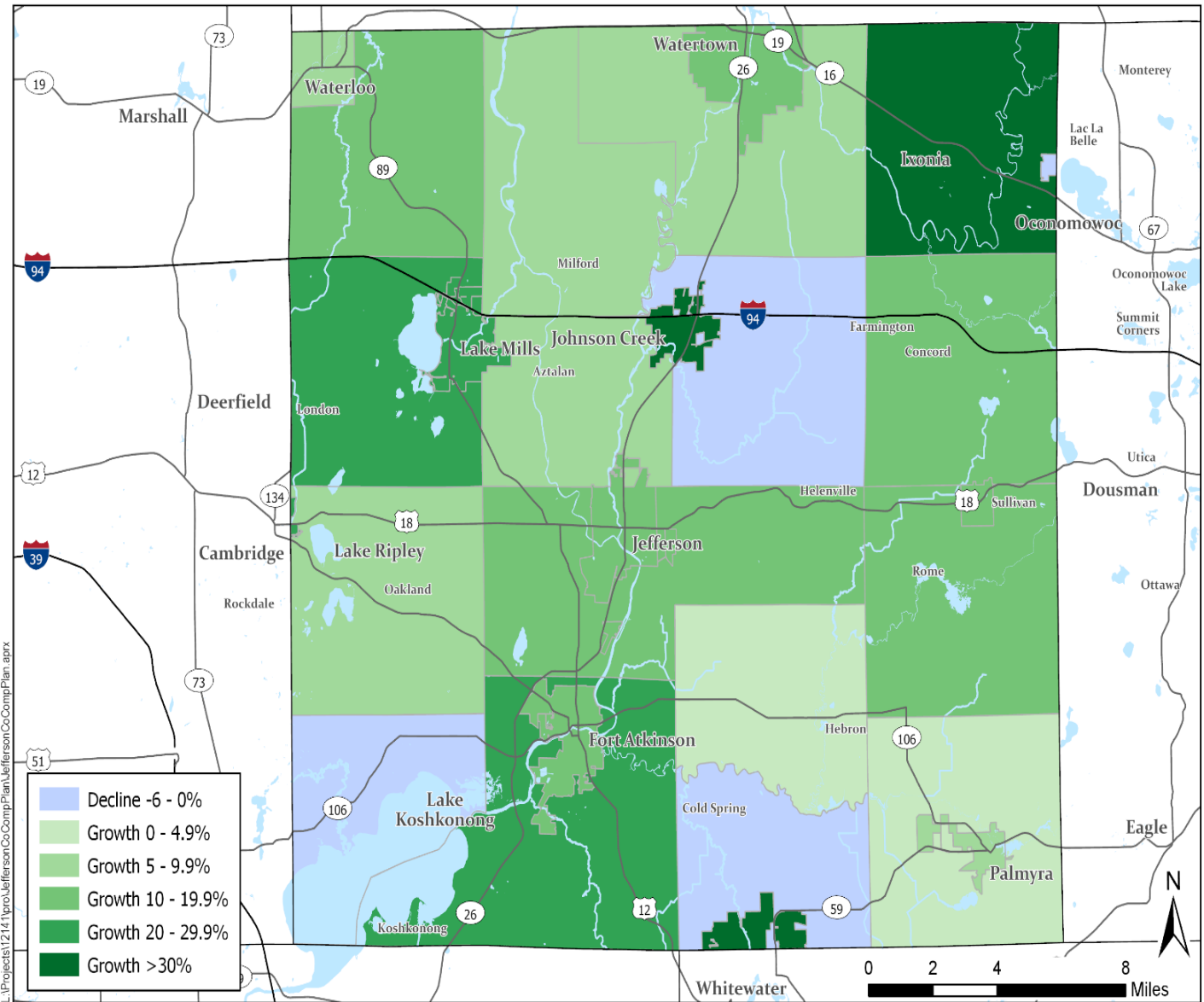
	2018 Population	2040 Estimate	% Change 2018-40
Jefferson County	84,352	100,300	18.9%
Fort Atkinson	12,390	14,020	13.2%
Jefferson (City)	7,967	9,080	14.0%
Lake Mills	5,953	7,380	24.0%
Waterloo (City)	3,362	3,685	9.6%
Watertown (City)	23,945	27,960	16.8%
Whitewater	14,804	19,250	30.0%
Johnson Creek	2,997	4,455	48.6%

Level of Service

The Jefferson County Parks Department uses a “Level of Service” standard of 12 acres of parkland per 1000 in population. This standard was developed in the *1997 Jefferson County Parks, Recreation, and Open Space Plan* and is used to determine parkland needs in proportion to future population growth. Jefferson County Parks do not include acreage figures from city and village parks, Wisconsin Department of Natural Resources, or US Fish and Wildlife Service properties.

Jefferson County Parks currently covers 1,180 acres, over 19 miles of hiking trails, and 35 miles of off and on-road bicycle/pedestrian trails. The minimum acreage of parkland using 2018 population figures is 1,012 acres. If population growth occurs as forecast by 2040, the minimum will be 1,200 acres.

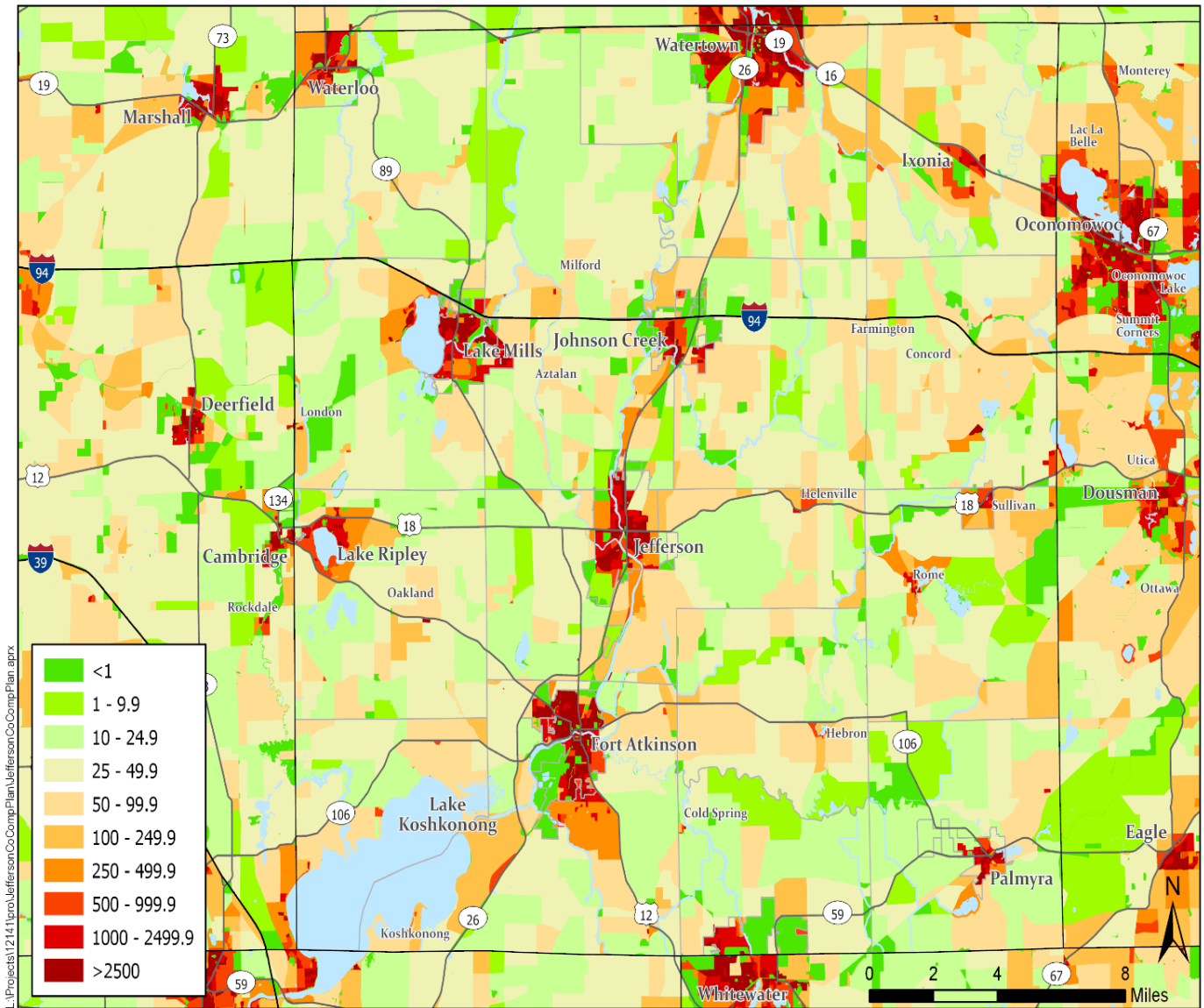
In 2017 approximately 66 percent of the population lived in urban areas and 34 percent in rural areas. Population density per square mile is concentrated in the cities and villages with clusters along the Rock River and area lakes, see Population Density Per Square Mile Map on page 40. Public questionnaire responses indicate a desire for canoe and kayak rental, access to waterways, and off-leash dog parks near the larger cities.



Population Projection 2018 - 2040

Jefferson County Comprehensive Plan & Agricultural Preservation and Land Use Plan
 Source: Wisconsin Demographic Services Center, 2013 and 2018





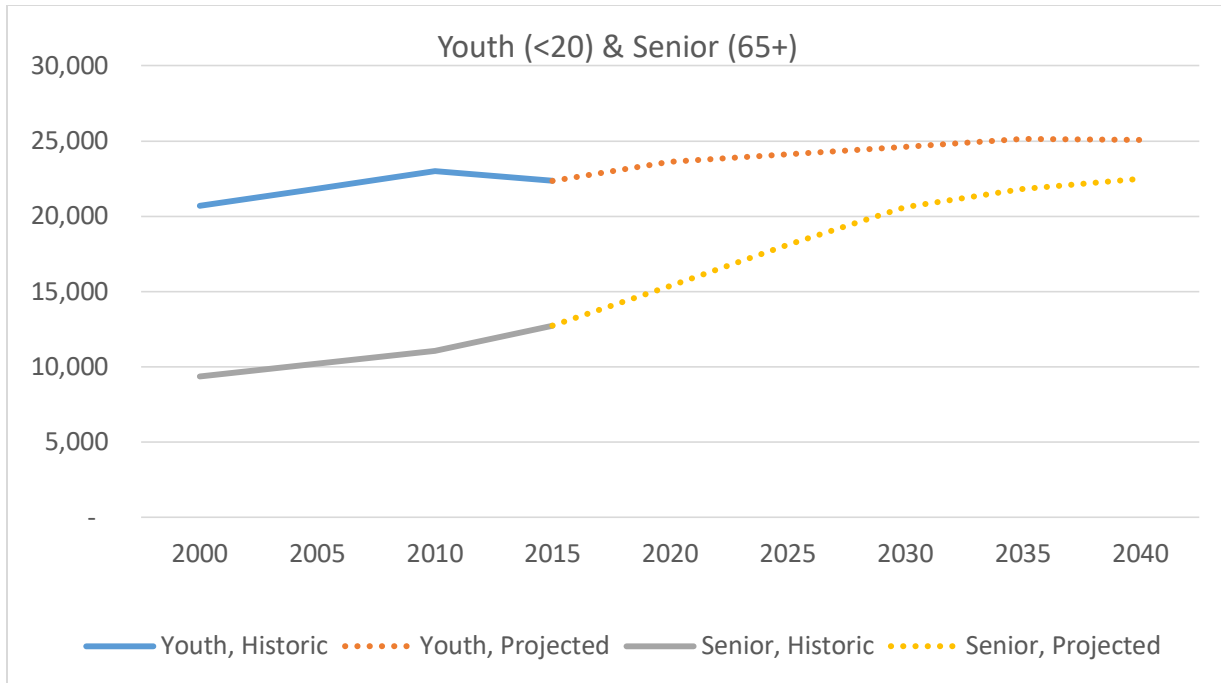
SRI Population Density per Square Mile
 Jefferson County Comprehensive Plan & Agricultural Preservation and Land Use Plan
 Source: U.S. Census Bureau, Census 2010

JEFFERSON COUNTY
 WISCONSIN

Aging Population and Youth

The chart on page 41 looks at the projected growth in the population of youth under 20 years old and the population of seniors over the age of 65 from 2000 to 2040. By 2040 nearly 25,000 residents will be under 20 years of age, about 25 percent of the population. Seniors in the population will rise to about 23,000, or 23 percent of the population by 2040.

Planning activities and facilities for both groups was mentioned in public comments. Seniors have more time to enjoy the parks system and friends groups and they could form a core of volunteers. Seniors may also need more universally accessible facilities. Public survey respondents asked for more engagement with youth and more outdoor activities and nature education.



Ethnicity

Jefferson County’s population, while predominantly white, is becoming more diverse. Between the years 2000 and 2018, Hispanic and Latino citizens increased by 3.1 percent and Black or African American residents increased by 0.71 percent.

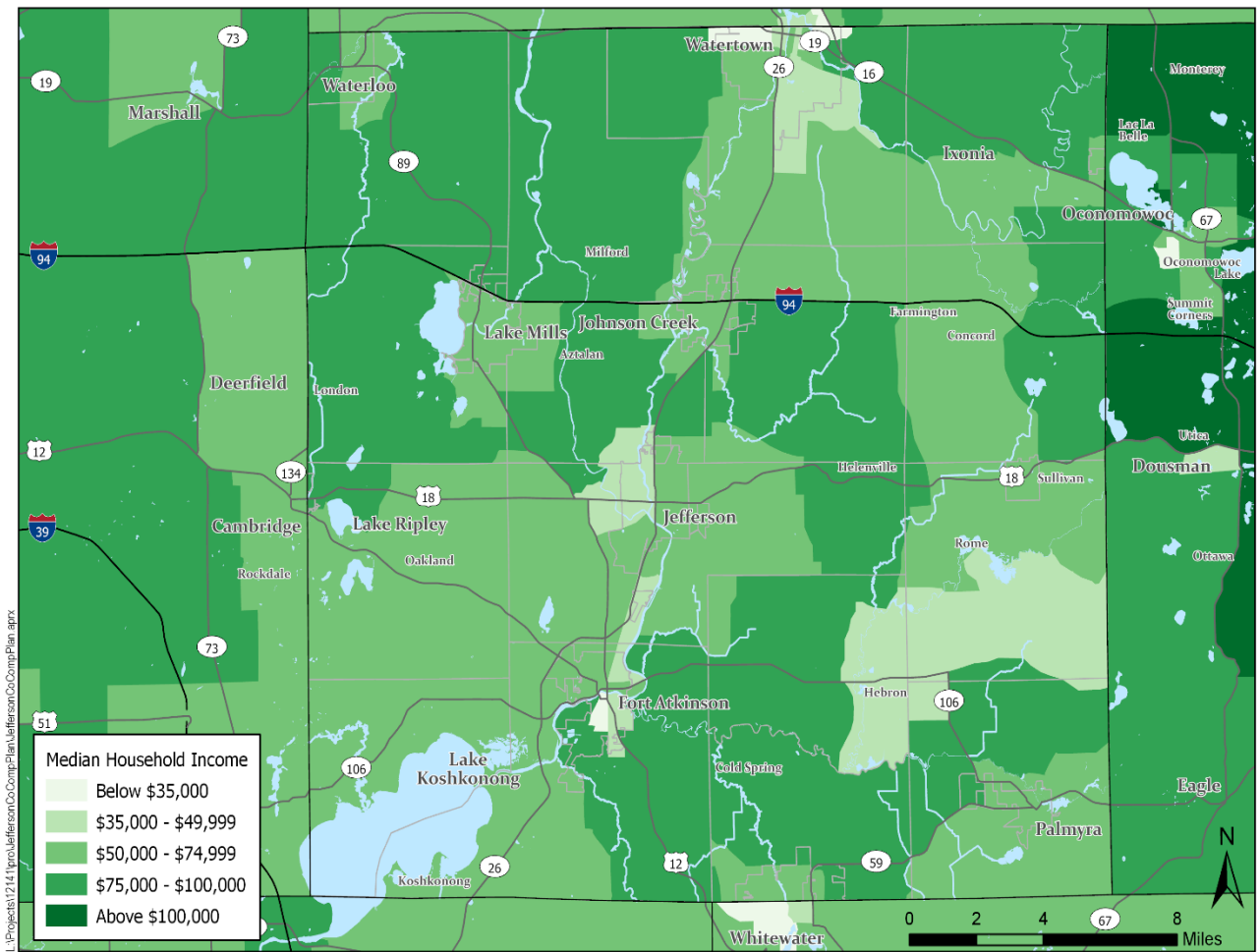
US Census Bureau, Jefferson County, Wisconsin Quick Facts

Race and Ethnicity	2000 Percent Population	2018 Percent Population	Change
White Alone	96.20%	96.0%	(0.2%)
Hispanic or Latino	4.10%	7.2%	3.10%
Two or More Races	0.92%	1.3%	0.38%
Black or African American	0.39%	1.1%	0.71%
Asian	0.47%	1.0%	0.53%
American Indian and Alaska Native	0.33%	0.5%	0.17%
White Alone, not Hispanic or Latino	(2011) 90.40%	89.5%	(0.9%)

Household Income

The median household income in Jefferson County is \$59,215. Between 2000 and 2017, the median annual household income in Jefferson County dropped \$7,546.00 or 11.3%. While the median household income is greater in Jefferson County than the State of Wisconsin and the United States as a whole, the drop in Jefferson County was a greater percentage. The map on page 41 shows the distribution of median household income throughout the County and also into neighboring Dane and Waukesha Counties.

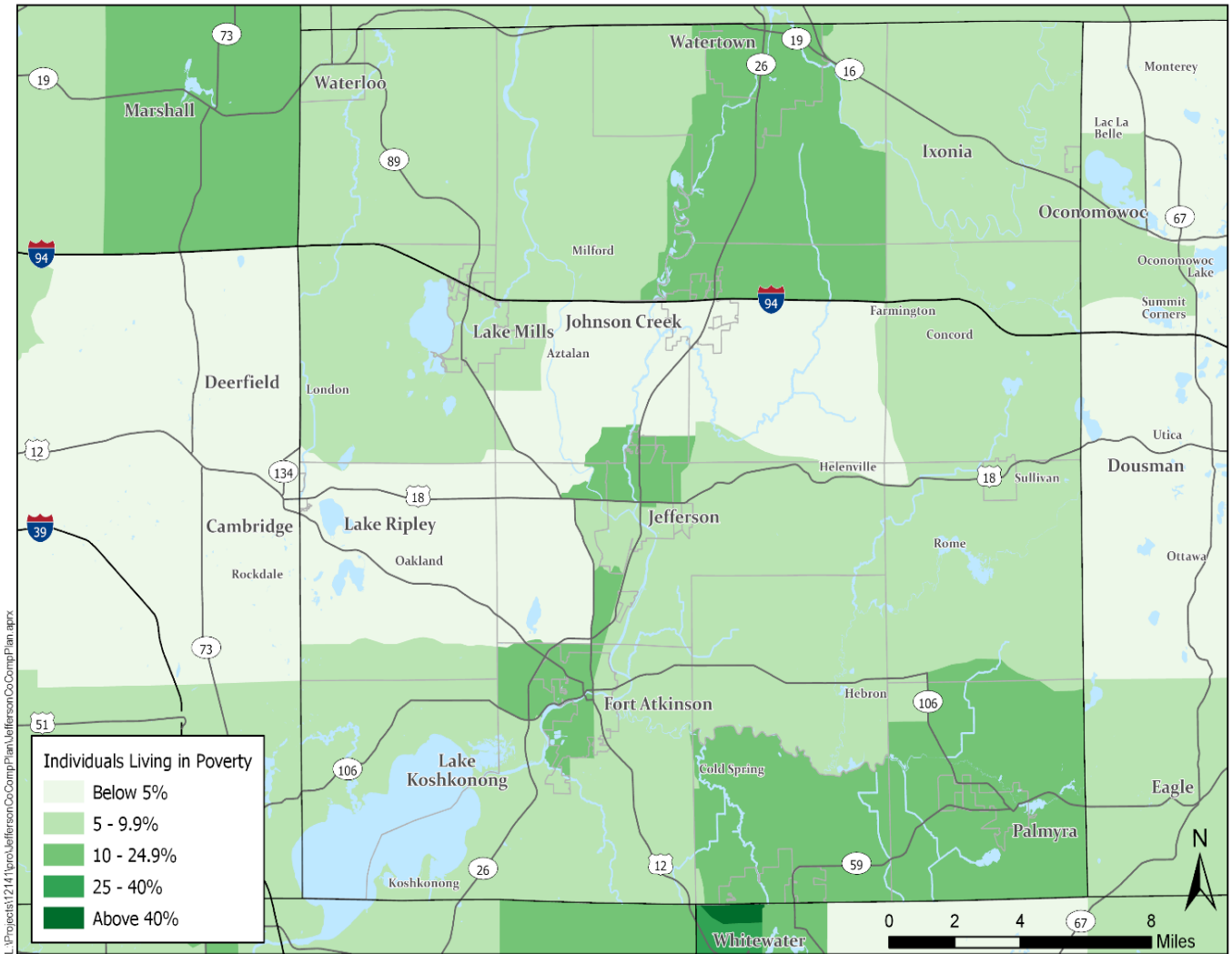
	Median Household Income (2000, adjusted for inflation)	Median Household Income (2013-2017)	Change	%
Jefferson County	\$66,761	\$59,215	\$(7,546.00)	-11.3%
Wisconsin	\$62,335	\$56,759	\$(5,576.00)	-8.9%
United States	\$59,777	\$57,652	\$(2,125.00)	-3.6%



Median Household Income
 Jefferson County Comprehensive Plan & Agricultural Preservation and Land Use Plan
 Source: U.S. Census Bureau, American Community Survey 2013 - 2017 Estimates

JEFFERSON
 COUNTY
 WISCONSIN

The Poverty Status Map on page 43 shows the distribution of individuals living below the poverty line in Jefferson County according the American Community Survey 2013-2017. Poverty thresholds vary by the size of the family and age of the members. The same thresholds are utilized throughout the United States and are not specific to Wisconsin (US Census Bureau).



SRE Poverty Status
 Jefferson County Comprehensive Plan & Agricultural Preservation and Land Use Plan
 Source: U.S. Census Bureau, American Community Survey 2013 - 2017 Estimates



Economic Development and Tourism

The Jefferson County Tourism Council is composed of representatives of chambers of commerce, businesses and the public. Jefferson County Parks are featured in the annual Enjoy Jefferson County Guide. Several public comments mentioned the need for more and wider marketing of the parks system.

Tourism has a major impact on the economy in Jefferson County. Annual and cultural events and the abundant natural resources attract visitors, boaters, hunters, bicyclists, hikers, and bird watchers, among others. Direct visitor spending in 2018 was \$103.3 million and 1,741 people were employed in the tourism sector.

Wisconsin Department of Tourism

Total Tourism Impacts	In Millions		% Change
	2017	2018	
Direct Visitor Spending	\$95.5	\$103.1	8.01%
Total Business Sales	\$169.4	\$180.4	6.46%
Employment	1,683	1,741	3.45%
Total Labor Income	\$41.5	\$42.9	3.37%
State and Local Taxes	\$11.2	\$11.9	5.54%

Parks and tourism are tied to economic development. Businesses are looking for a high quality of life for their work force and that often involves outdoor recreation, parks and trails.

In Jefferson County manufacturing tops all industries in percent of total employment, total payroll, and provides 26 percent of the County’s jobs; followed by trades, transportation and utilities, education and health, professional and business services, leisure and hospitality, and construction. Jefferson County added 564 jobs from 2017 to 2018, a growth rate of 1.7 percent. (2019 Workforce Profile, Wisconsin Department of Workforce Development)

The largest manufacturing sector is food manufacturing and processing. Agriculture contributes \$1.5 billion to the economy in Jefferson County with 10,800 jobs linked to agriculture and 240,000 acres of agricultural land (Jefferson County Tourism Council). Most of the Jefferson County Parks are located in rural areas and surrounded by farmland. Protecting existing parks with agricultural easements on the surrounding land may benefit both the parks system and farm families with financial incentives and assurance that agriculture is a priority in Jefferson County.

Needs Assessment

Public Participation Summary

The Jefferson County Parks Department continually seeks input from park users and the public. A public meeting to gather input on the *Jefferson County Parks, Recreation and Open Space Plan* was held on February 17, 2020. Other meetings included a meeting with staff to kick off the project on June 27, 2019; a stakeholder meeting on November 13, 2019; and a meeting on December 5, 2019 with maintenance staff on accomplishments and future projects. This chapter presents user, stakeholder and staff thoughts and ideas.

The purpose of the public workshop was to present past Jefferson County Parks System plans, dialogue around what users and stakeholders value the most about their interaction with the Jefferson County Parks System, share what they are most proud and the hopes they have for the future parks system, partnership opportunities, and future actions and initiatives that are most important to them.

This process is part of a routine cycle of county plan reviews and updates going back to 1997. User and stakeholder perspectives and ideas make a difference and will help influence the future direction of the Jefferson County Parks.

A snowstorm the evening of the meeting resulted in few attending. The three questions asked at the public meeting were sent out electronically to stake holders and those requesting the questionnaire after newspaper and Facebook articles about the planning effort. About 45 questionnaires were returned electronically. The Covid-19 pandemic made it impossible to hold more public meetings in a timely manner.

Three Questions

- 1. What do you most appreciate, are proud of and value most about the Jefferson County Parks System and implementation of past plans? (Celebration of Success and our Values)**
- 2. What are new vision ideas that you think could lead to an improved or enhanced Parks System? (Future Hopes and Vision Ideas)**
- 3. How should the parks system move forward and which initiatives and actions are most important to you? (Future Actions and Strategies.)**

The responses from those attending the public meeting are listed below. With a small number attending, the discussion was not limited to the three questions.

Public Meeting Comments

- Add camping along waterways in appropriate places.
- Create a monetary fund for land acquisition to be able to act quickly if opportunities present themselves.
- The Jefferson County Parks system has gone 0 to 80 in 20 years and is said to be unique in North America with paddling, bicycling, hiking and camping.
- The investment and hard work put into the parks is appreciated.
- Create a bicycle trail connection from Whitewater to the Glacial River Trail.

- The parks make Jefferson County a great place to live.
- More mountain biking trails would be welcome.
- A park and boat landing at the old highway shop in Jefferson are being developed in concert with the City of Jefferson.
- Interest in completion of the Interurban Trail to Waukesha and further east.
- The Trieloff Property on Rock Lake may be an addition, part will be used to straighten CTH N.
- Health groups could partner with activities in the parks to get people outside.
- Have outdoor activities for kids in the parks like Whitewater does, hide a squirrel doll in the park and give kids clues they can follow on their phone.
- Jefferson County has a diversity of parks that make it unique, something for everyone.
- A nice four-season shelter is needed for weddings and conferences, perhaps at Korth Park.
- Rest stops with water and restrooms are needed along the Glacial River Trail and Interurban Trail. There are no amenities between cities.
- Parks and trails are lacking in the northeastern part of Jefferson County. The Town of Ixonia has the most population growth.
- Better access to Crawfish River Park from Hwy 18.
- Cross-country skiing and groomed trails are available at Dorothy Carnes Park east and west, Korth, Carlin-Weld and sometimes Garman but that trail is very steep.
- Would like to partner with McKay Nursery to expand Garman trails in the winter.
- Rental of canoes, kayaks, skis, and snowshoes would be welcome and an opportunity to partner with local businesses perhaps from a structure within a park. Renting canoes for a family from current vendors can be cost prohibitive.

Electronic Comments

Electronic comments received on the three questions were categorized and tabulated. This a non-scientific tabulation and open to interpretation. Summary charts are included for each question with the number of times a particular park, facility or activity was mentioned. The full compilation of public comments is available from the Jefferson County Parks Department.

Question 1

What do you most appreciate, are proud of and value most about the Jefferson County Parks System and implementation of past plans? (Celebration of Success and our Values)

Question 1 addresses past and present work by the Parks Department and the implementation of park and open space plans and planning for individual parks.

The most appreciated and valued elements in the parks system:

- Exceptional park facilities
- The diversity of parks and a balance of active and passive activities
- Protection of natural resources
- The fine job done by parks staff

The particular parks and activities that were appreciated the most:

- Dorothy Carnes County Park
- Jefferson County Dog Park
- Bicycle trails

- Hiking paths
- Korth County Park

Respondents also mentioned the value of community partnerships and donors.

The summary response charts below record the number of times a concept was mentioned within all the public comments for Question 1. One person's comments may cover several topics. Not all respondents commented on every question.

Favorable comments about the Park System	Number of Mentions
Exceptional, well maintained park facilities	12
Diversity of parks and balance of active and passive activities	8
Protection and conservation of natural resources	7
Fine work by the Parks Staff and their passion for the parks	7
Mythological acquisition planning	4
Design of the parks and system	3
Number of parks and spaces to be outdoors	3
Communication and involvement with parks department	1

Favorable opinion of a particular park, facility or activity	Number of Mentions
Carnes Park	8
Dog Park	6
Bicycle Trails	6
Hiking Paths	6
Korth Park	5
Mountain bike paths	2
Garman	2
Birding	2
Historic resources – Native American mounds, log cabin	2
Community Gardens	1
Rome Pond Park	1
Glacial Heritage Area	1
Pavilions	1
Playgrounds	1
Cross-country skiing	1
Paddling	1

Favorable opinion of partnerships and donors	Number of Mentions
Appreciate organization and business partnerships	1
Kindness of donors	1

Question 2

What are new vision ideas that you think could lead to an improved or enhanced Parks System? (Future Hopes and Vision Ideas)

Question 2 asked the public to give new ideas that would enhance and improve the Parks System in their eyes.

For future park development the respondents suggested the following enhancements the most times:

- Complete bicycle trails between communities
- More interpretive and educational signs along trails
- Expanded mountain bike trails
- More water access points

Marketing the parks within and outside of Jefferson County, expanding the Parks System, and increasing education about the parks and natural areas were mentioned several times.

New ideas for park facilities	Number of Mentions
Complete bicycle trails between communities	6
More interpretive and educational signs along trails	5
Expand the mountain bike park and have trails for beginners	4
More water access points	4
Second dog park in southern Jefferson County or more off-leash parks	3
Quiet natural areas and wilderness desirable	3
More parking	2
Food forest theory	2
Organic only community gardens	2
More pavilions, larger pavilions and add electricity	2
Restore native habitat and add trees	2
More Rustic camping	1
A splash pad	1
Updated and clearer signage and Garman and Holzhueter	1
Increase accessibility of trails, wildlife viewing, fishing	1
Plant examples of native landscaping for homeowners	1
Add limestone trail at the Mason Farm	1
More camping	1
Grass to jog on along paved bicycle trails	1
Not a fan of bike trails in parks	1
More bicycle trail signage	1
More hiking	1
More motorized recreational activities	1
Keep up what you are doing	1
More ADA compliant fishing structures	1
Sweep paved bicycle trails in the spring	1
Open the restrooms (Restrooms were temporarily closed during Covid-19)	1

New ideas for acquisition and planning	Number of Mentions
Expand the parks system	2
Protect agricultural land adjacent to the parks	2
Enhance the Glacial Heritage Area	1
More parks on water	1
Create habitat corridors with other counties	1
More connection/alignment with the Roc River National Waterway initiatives	1

New ideas for public education in the parks	Number of Mentions
Education and a brochure on the Native American Mounds	2
More watershed education and signs along roads	2
Work with schools and involve youth in parks projects	2
Utilize the Waterloo Trailhead for educational events	1
Potential for sustainable agriculture education	1

New ideas for activities and events	Number of Mentions
Add volunteer and events coordinator	2
Expand Brew with a View to other parks	1
Start an annual tourism event like Bike the Barns	1

New ideas for marketing	Number of Mentions
More marketing of parks within and outside of Jefferson County	4
Collaborate with other agencies and businesses	2
Encourage younger people to use the parks	1
Partner with Fort Healthcare Community Health and Wellness1	1

Question 3

How should the parks system move forward and which initiatives and actions are most important to you? (Future Actions and Strategies)

The public was asked which future initiatives and actions would the most important to them. As methods to move forward, respondents mentioned the following the most often:

- Acquiring more land for parks
- Protecting native species/natural areas through acquisition
- Bike and walking trail connections
- Canoe/kayak trails with rest stops

Several respondents felt that the Parks Department could benefit from marketing efforts. More education about the natural resources within the parks and programing for youth were mentioned. Many people praised the good job by Parks Staff and suggested creating an acquisition fund.

Acquisition/expansion/planning is important	Number of Mentions
Acquire more land for parks	7
Protect native species through acquisition	3
Bike and walking trail connections	3
Canoeing/kayaking trails and rest stops with bathrooms	2
Better access to rivers	2
Create a park along Fort Atkinson Riverwalk using greenspaces	1
Turn Blackhawk Island lots into a park or natural area	1
Add to and maintain Carnes, Korth, and the Glacial River Trail	1
Designate the Bark River a water trail and clean up.	1
Dog park north of I-94	1
Plan for climate change	1

New facilities/activities/events are important	Number of Mentions
Better and more marketing	5
More programming and education for users	4
Make parks more accessible	3
Fishing	2
More facilities/playgrounds	1
Environmentally friendly activities	1
Family activities	1
Not an advocate for bicycle trails in parks	1
Get kids more active	1
More active areas and less picnic areas	1
Diversity of activities that appeal to everyone	1
Food parks	1
Scheduled events like Mason Farm (Jamboree)	1
Canoeing event	1
Open everything up and bathrooms (submitted after Covid-19 restrictions)	2

Maintenance is important	Number of Mentions
Keep up the good job	5
Cleanliness and safety is important	2
Discourage all use of pesticides and herbicides	1

New funding and partnerships are important	Number of Mentions
Create a fund for acquisition	4
Create a marketing fund	1
More state partnerships	1

Staff and leadership are important	Number of Mentions
Hire a full time director	1
More citizen involvement on boards	1
Keep wonderful staff and leadership	1
Better communication, update website	1

Conclusion

The public responses to the survey questions indicate that, in general, park users are very happy with the diversity of large natural resource-based parks and the activities that are offered. They appreciate the work of the Parks staff. Many indicated that they would like more bicycle and mountain bike trails with more connections to cities and villages. A dog park in the Fort Atkinson/Whitewater area and more access to rivers and lakes by canoe or kayak were also mentioned. Many said the Parks Department could do more marketing and encourage youth to use the parks.

Needs Assessment

Statewide Comprehensive Outdoor Recreation Plan 2019-2023

The Wisconsin Department of Natural Resources *Statewide Comprehensive Outdoor Recreation Plan* (SCORP) analyzes recreation opportunities, needs, and trends throughout Wisconsin. The WDNR primarily considers state park activities but also looks at regional and county recreational trends and provides grants to parks departments. SCORP information is useful to Jefferson County in predicting what recreational activities the public is and will be interested in.

Jefferson County is in the Southern Gateways Region in the SCORP analysis, along with Dodge, Columbia, Sauk, Richland, Iowa, Lafayette, Green, Rock, and Dane Counties.

The full SCORP document can be found here: <https://dnr.wi.gov/topic/Lands/scorp/>

Top Recreation Needs at County Park Properties in the Southern Gateways Region

In this region campsites, recreational bicycle trails, dog parks, and disc golf courses were the top four needs identified in the Southern Gateways Region. These are areas that Jefferson County has already focused its resources and will continue to do so.

This table is based on responses to a questionnaire sent to all Southern Gateways Region county park systems in 2018. The values reflect the percent of counties identifying the recreation activities as a top five need on their properties.

Activity	Percent of Counties identifying activity as a Top 5 need.	State Average
Campsites	71%	58%
Hiking/walking/running trails	29%	53%
Bicycling trails – mountain biking	29%	51%
Bicycling trails – recreational/rail-trail	57%	46%
Motorized recreation trails	0%	42%
Public shore access	14%	42%
Dog parks	57%	32%
Boat launches	14%	26%
Playgrounds	29%	25%
Hunting opportunities	14%	21%
Picnic areas	29%	19%
Disc golf courses	43%	16%
Equestrian trails	14%	12%
Shooting ranges	0%	7%
Sports fields	0%	5%
Sports courts	0%	4%
Number of Counties providing input	7	

Estimated potential change in statewide participation in selected nature-based recreation activities from 2020 to 2040

This table from SCORP identifies the top 25 recreational activities expected to have the most growth state-wide by 2040 based on population growth projections and assuming the rate of participation stays the same as it is today.

Activity	Percent Growth
Birding/wildlife watching at home	8.6%
Birding/wildlife watching away from home	7.7%
Visiting a nature center	7.3%
Nature photography	7.0%
Gathering berries, mushrooms, etc.	6.9%
Picnicking/tailgating/cookout	6.3%
Visiting a beach/beach walking	5.3%
Hiking/walking/running on trails	5.3%
Motor boating	5.3%
Fishing - any	5.2%
Hunting - any	5.2%
Driving 4-WD vehicles on trails or routes	4.9%
Target shooting	4.6%
Cross-country skiing	4.6%
Sailing	4.5%
Swimming in lakes/rivers/ponds	4.5%
Ice skating outdoors	4.2%
Bicycling on roads	4.1%
RV camping	3.9%
Ice fishing	3.7%
Walking/running dogs on trails	3.6%
Riding ATV/UTVs on trails or routes	3.5%
Target archery	3.4%
Waterskiing/tubing/wakeboarding	3.3%
Canoeing/kayaking	3.2%

Southern Gateways Summary

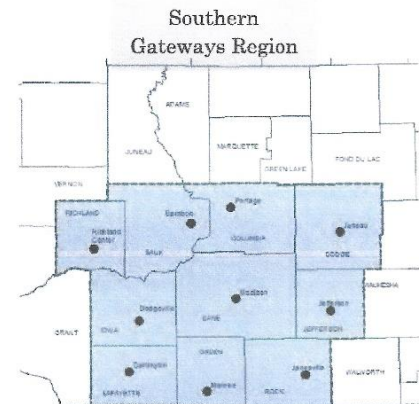
The Wisconsin SCORP identifies desired state park activities that county parks can also provide. The following page out of the SCORP Executive Summary for the Southern Gateways Region summarizes a public, state-wide survey conducted for SCORP. Jefferson County Parks already provide many of the listed activities.

Holzhueter Farm State Park in Jefferson County is owned by WDNR but will be managed with assistance from Jefferson County. The following summary is especially pertinent to that property.

SOUTHERN GATEWAYS REGION

Home to the state's most popular park, Devil's Lake State Park, the Southern Gateways Region well known for a variety of recreational opportunities. Concentrated urban centers have driven demand for recreational opportunities, including the prominent demand for both motorized and non-motorized trails in the area.

The department believes there are opportunities to meet many of the recreational experiences desired by the 3,700 public input on some of the properties it manages in the Southern Gateways Region. A brief summary is provided here.



STATE PARKS

- **Hiking/walking/running loop trails** of varying lengths.
- **Surfaced bicycle trails** that expand the existing network linking cities and villages and campgrounds.
- **Mountain biking** to expand existing opportunities and create new destinations.
- **Canoeing/kayaking** with improved walk-in trails and access to waterbodies.
- Lake fishing from shore or pier, by adding **improved boat access sites** such as ramps for trailered boats.
- **Swimming in lakes and rivers** that are accommodated by beaches, changing rooms and other amenities.
- **Primitive camping** to allow visitors to take a break from the hustle and bustle of everyday life.

STATE TRAILS

- **Hiking/walking/running loop trails** of varying lengths.
- **Surfaced bicycle trails** that expand the existing network linking cities and villages and campgrounds.
- **Mountain biking** to expand existing opportunities and create new destinations.
- **Developed camping**, including adding electrified sites.
- **Primitive camping** to allow visitors to take a break on their trail adventures.

STATE RECREATION AREAS

- **Hiking/walking/running loop trails** of varying lengths.
- A future **motorized recreation area** is being sought to accommodate various motorized recreation, including ATV/UTV riding, off-highway motorcycling and four-wheel drive vehicle riding.
- **Surfaced bicycle trails** that expand the existing network linking cities and villages and campgrounds.
- **Mountain biking** to expand existing opportunities and create new destinations.
- **Canoeing/kayaking** with improved walk-in trails and access to waterbodies.
- Improved **boat access sites** such as ramps for trailered boats for motorboating and lake fishing.
- **Primitive camping** to allow visitors to get away from the urban noise.

STATE WILDLIFE AREAS

- **Hiking/walking/running loop trails** of varying lengths.
- **Surfaced bicycle trails** that expand the existing network linking cities and villages and campgrounds.
- **Mountain biking** to expand existing opportunities and create new destinations.
- **Canoeing/kayaking** with improved walk-in trails and access to waterbodies.
- Improved **boat access sites** such as ramps for trailered boats for motorboating and lake fishing.
- **Swimming in lakes and rivers** that are accommodated by beaches, changing rooms and other amenities.
- **Primitive camping** to allow visitors to make hunting and fishing trips more adventurous.

A number and diversity of recreation needs were identified by the public, including:

- Trails for motorized recreation
- Hiking/walking/running trails
- Bicycle trails – both paved and natural surface
- Camping – rustic/quiet campgrounds

Top activities that ROA input form respondents participate in include:

- ATV/UTV Riding
- Bicycling – surfaced trails
- Bicycling – mountain biking, single track
- Camping – tent
- Canoeing/kayaking
- Cross-country skiing/snowshoeing
- Fishing – from a boat, canoe or kayak
- Fishing – from shore
- Hiking, walking and running on trails
- Swimming
- Snowmobiling

Natural Resources Overview

Jefferson County is a mosaic of farms, natural areas, and small towns. Varied natural resources and waterways influenced where cities and villages developed, provide rich soils for farming, and continue to support unique plant and animal habitats. Popular recreational activities such as hiking, biking, boating, and being in nature are enhanced by high quality natural areas.

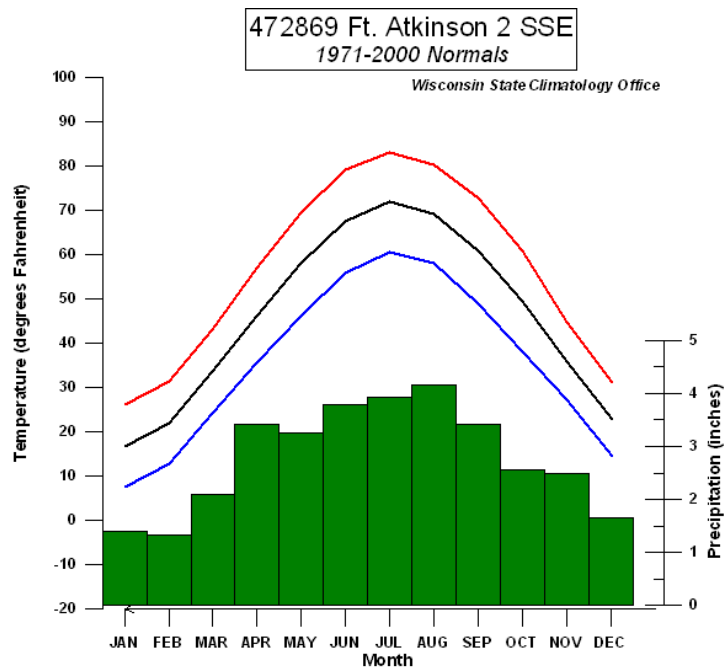
Locations with significant natural resources were identified during prior County planning efforts and the *Glacial Heritage Area Plan* (see Appendix I) for potential protection and public parks. This chapter gives an overview of the rich natural resources in Jefferson County and the factors that led to the formation of the distinctive southern Wisconsin landscape we see today.

Climate

Jefferson County’s climate is continental with warm, humid summers and cold, dry winters. Almost two thirds of all precipitation falls during the 183 day growing season. Both droughts and floods are not uncommon. The median date of the first autumn frost (32 degrees) is between October 1 and October 10. The median date of the last spring frost is April 21 to May 10.

The graph to the right shows the normal highs (red), lows (blue), average temperature (black), and precipitation by month (green bars) at Fort Atkinson, in central Jefferson County.

Midwest Regional Climate Center data from 1892 to 2017 shows an average annual temperature of 45.84 degrees in southcentral Wisconsin. The average temperature is trending upward by 1.38 degrees per century.



According to the National Weather Service Milwaukee/Sullivan 30 year Precipitation Average, Jefferson County usually receives 34 to 37 inches of precipitation annually. Precipitation ranges from a low of 1.3 inches in January to a high of 4.2 inches in August. Normal winter snowfall ranges from 0.1 inches in October to 12.5 inches in January with an annual average of 38.2 inches. Precipitation from 1892 to 2017 has trended upward at 4.59 inches per century according to the Midwest Regional Climate Center. Flooding seems to have increased in Jefferson County since 2008 and parks on rivers have had to be closed periodically.

Geology

Platteville-Galena dolomite bedrock, deposited some 400 million years ago, underlies Jefferson County and is at or near the surface in some places. Cambrian sandstone, formed 500 million years ago, underlies parts of the western half of the county from Jefferson to Lake Koshkonong. Precambrian rock, 545 million to 2,500 million years old, called Waterloo quartzite, forms outcrops in northwestern Jefferson County, an important area for groundwater infiltration. Unconsolidated (loose) deposits formed during the Wisconsin Glaciation 90,000 to 12,000 years ago include glacial till, outwash deposited by glacial melt water; lake-laid clay, silt and sand; and accumulations of peat and windblown silts. The flatter deposits formed the agricultural areas of Jefferson County.

Glaciation, Elevation and Drainage

Jefferson County's landscape features were created by the retreat of Wisconsin Glaciation about 12,000 years ago. A prominent glacial feature is the Kettle Moraine in the southeastern corner of the County. Here the Green Bay glacial lobe met the Delavan lobe and pushed up a mound of soil between them that formed a moraine. The Kettle Moraine features the highest point in Jefferson County, sharp hills and steep round valleys called kettles and other glacial remnants such as eskers (narrow, sinuous ridges) and kames (conical hills).

As the glacier retreated to the north, debris and meltwater created parallel recessional and end moraines in arcs of low gravelly hills across the County. A glacial ground moraine forms a gently undulating plain across most of the County. Hills elongated in the direction of the glacial movement, called drumlins, are found within the ground moraine. The northern third of the county has one of the three classic drumlin fields in the United States and is a feature in the Garman Nature Preserve.

The Jefferson County High Elevation and Upland Woods Map on page 65 highlights elevations over 900 feet above sea level in orange and red and indicates the drumlins as oval hills and the recessional moraines as large arcs of high elevation. Wetlands, where the ground water is near the surface, have formed between the drumlins. Lighter soil particles deposited by glacial melt water eventually formed good agricultural soils between Lake Mills and Lake Ripley. Palmyra, Cold Spring, Hebron, and Sullivan Townships were once a large glacial lake basin.¹

The highest point in the County, at 1040 feet above sea level, is Bald Bluff located just south of Palmyra in the Southern Kettle Moraine State Forest. Other hills with scenic views and rugged topography are located just west of Lake Mills, Jefferson, Fort Atkinson, in the Palmyra area, and in the drumlin fields running east and south from Watertown and Waterloo to the Town of Sullivan. These high points are also areas of ground water infiltration and recharge, which supplies our drinking water.

The many large and small streams that cross the County were created by melt water channels cutting through glacial ice and drift. Marshes and shallow lakes, such as Rose Lake at Dorothy Carnes County Park, formed where melt water did not cut channels. The lowest elevation, around 780 feet above sea level, occurs in the southern part of the County along the lower reaches of the Crawfish, Rock, and Bark Rivers, and along Lake Koshkonong and its associated wetlands.

¹ Glocker, C.L. 1979. Soil Survey of Jefferson County, Wisconsin. Nation Cooperative Soil Survey

Jefferson County is located in the Rock River Basin. Waters from the Rock eventually reach the Mississippi River. The major tributaries of the Rock River are the Crawfish, Bark, Scuppernong, and Oconomowoc Rivers, and Whitewater, Koshkonong, and Deer Creeks.

Soils

Most soil types in Jefferson County were formed from parent material that was influenced by glaciation, precipitation, and vegetation such as woodlands and prairies. The soil types fall into one of seven major soil associations:²

- Houghton-Adrian: Very poorly drained, level organic soils, formed in old glacial lake basins.
- Fox-Casco-Matherton: Poorly to excessively well drained, nearly level to very steep soils with loamy subsoil underlain by sand and gravel. Occurrence is on outwash plains and terraces, kames, eskers, and terrace escarpments.
- Palms-Keowns-Milford: Nearly level, poorly drained soils that are organic or have loamy or clayey subsoil. Their location is on terraces and in depressions in old lake basins.
- Waucousta-Lamartine-Theresa: Silty or loamy soils that are poorly to well drained and level to sloping. They are located on till plains, drumlins, terraces in old lake basins, and in low areas between drumlins.
- Rodman-Moundville-Casco: Excessively to moderately well drained soils that are nearly level to very steep with a loamy to sandy texture. These are soils of outwash plains and terraces in the Kettle Moraine area.
- Kidder-McHenry-Rotamer: Well drained and moderately well drained soils on gently sloping to steep till plains and drumlins with a silty or loamy texture over sandy loam glacial till.
- Whalan-Kidder: Well drained to moderately will drain gently sloping to steep soils on side slopes and ridge tops of glaciated uplands.

Environmental Corridors

The *Jefferson County Agricultural Preservation and Land Use Plan* defines environmental corridors as land that meets any of the following criteria:

- Wisconsin DNR delineated wetlands.
- Located in the 100-year flood zone, Federal Emergency Management (FEMA) designated 1 percent annual chance of flooding.
- All publicly-owned land designated as public parks or conservation areas.
- Contiguous upland woods of over 10 acres in area.
- Slopes of 20 percent or greater as determined by the USDA Soil Survey GIS map.

Significant natural resources, cultural sites, and good agricultural land often lie within environmental corridors. The *Jefferson County Agricultural Preservation and Land Use Plan* suggests that these continuous areas of environmentally sensitive land should be protected from non-agricultural development and may be priority areas for park acquisition.

Land Cover and Land Use

The following chart from the Jefferson County Land and Water Conservation Department illustrates the variety of land uses in Jefferson County. Farmland is the largest land use, covering 57 percent of the 372,938 acres in Jefferson County. See Land Use/Land Cover map on page 67.

² Glocker, C.L. 1979. Soil Survey of Jefferson County, Wisconsin. Nation Cooperative Soil Survey

Jefferson County Land Uses 2018 Jefferson County Land and Water Conservation Department

Land Use	Acres	% Total Acres
Agriculture - cropland, orchards, tree nurseries, uncultivated land	212,665	57.0
Wetlands – designated by WDNR	55,517	14.9
Urban and Roadway Corridors	35,593	9.5
Rural Development	22,963	6.3
Upland Woods	19,831	5.3
Surface Water	16,850	4.5
Recreational Land – public parks, golf courses, gun clubs, campgrounds, private recreation	6,502	1.7
Commercial and Industrial – retail, manufacturing, machine shops, railroad right of way, communications, utilities	1,991	0.5
Rural Open – vacant lots, landfills, airfields	1,026	0.3
Total	372,938	100

Woodlands

About 19,831 acres or 5.3 percent of the land area of Jefferson County is designated as upland woods. This acreage figure does not include woodlands in wetlands. Jefferson County has extensive lowland forests along rivers and marshes, including uncommon tamarack swamps and bogs.

Prior to the 1830’s about half of Jefferson County, east of the Crawfish River and north of the Bark River, was heavily wooded. The rivers impeded frequent prairie fires that were set by lightning or Native Americans managing grazing land. A fire-intolerant mature sugar maple and basswood forest evolved on the east and north river banks. The timber provided raw materials for the early settlers who built sawmills and settlements on the rivers.

The remainder of the County, south and west of the major rivers, was a mix of fire-tolerant open grown oak savannas, tall prairies, tamarack bogs, and marshes. Prairies and savannas had almost entirely disappeared prior to restoration efforts at State Wildlife Areas and Jefferson County Parks during the last forty years. Faville and Snapper Prairies, along the Crawfish River south of Hubbleton are examples of existing native prairies.

Many woodlands were grazed or cleared for farming and today upland woods are located on rough, stony, steep, or poorly drained land, unsuitable for agriculture. Woodlots are sought for rural residential

development, further fragmenting the already scattered upland woods. See Elevation and Woodland Map, page 65.

Wetlands and Flood Plains

Wetlands cover 55,517 acres or 14.9 percent of the County, see Wetland and Floodplain Map page 66. Half of Wisconsin's original wetlands have been lost to agriculture, highways, and urban development. Through the efforts of the USDA Wetland Reserve Program, the WDNR, and Jefferson County Parks, hundreds of acres of wetlands have been restored in Jefferson County over the last decade.

Two such places are the Jefferson Marsh, now called the Jefferson Marsh Wildlife Area and Jefferson Tamarack Marsh State Natural Area (1,594 acres); and the Zeloski Unit of the Lake Mills Wildlife Area (1,618 acres) near Lake Mills. A significant wetland restoration was installed at Dorothy Carnes County Park as well.

Wetlands have a water table at or near the land surface. Characteristics of wetlands are hydric (waterlogged) soils, standing water at least part of the year, and wetland vegetation. Wetlands generally occur along lakeshores, streams, and large poorly drained areas.

Wetlands trap sediment and pollutants, hold and remove nutrients, aid in improving or maintaining water quality, attenuate (hold and slow down) flood waters, and provide habitat for many species of waterfowl, wildlife, and plants. Rose Lake marsh, a deep-water marsh at Dorothy Carnes County Park, may have the greatest bird diversity in Jefferson County.

Wetlands run in concentric bands in Jefferson County, located in the low areas between moraines and drumlins. Wetland complexes are found along the Bark and Oconomowoc Rivers in eastern and southern parts of the County and in a zone from Waterloo to Lake Koshkonong in the western part of the County.

100 year flood plains are mapped in the Wetlands and Floodplain Map. The flood plain map was updated in 2009. In any given year, there is a 1/100 chance of flooding in these areas. Some places, such as Blackhawk Island at the mouth of the Rock River, flood so frequently that Jefferson County has a program to purchase property and remove structures. Acquired land will become public and the Blackhawk Island Fishing Pier has been installed.

Lakes and Rivers

There are 16,850 acres of surface water in Jefferson County within thirteen watersheds.³ Major rivers include the Rock, Crawfish, Bark, Mauneshia, Oconomowoc, and Scuppernong.

Allen Creek, in the Town of Koshkonong, has been designated an "Exceptional Resource Water" in the Wisconsin State Statues due to its high water quality and threatened least darter fish. The 33 acre Allen Creek Wetlands State Natural Area protects the stream. See Jefferson County Stream chart on page 60.

There are 25 lakes in Jefferson County with 14,587 acres of surface area. Two of the lakes, Lake Koshkonong and Golden Lake, share shorelines with adjacent counties. Nineteen lakes are naturally formed and dams create 6 lakes. See Characteristics of Jefferson County Lakes on page 61.

³ Jefferson County Land and Water Conservation Department. Jefferson County Land and Water Resources Plan 2011-2020.

Jefferson County Streams

Jefferson County Streams	Length (miles)	Existing Use
Allen Creek ¹	8	WWSF
Ashippun River ¹	0 – 31.8	WWSF
Bark River ¹	68	WWSF
Battle Creek	0-2.1	WWFF
Crawfish River ¹	49.5	WWSF
Deer Creek	0-2	WWSF
	2-12	LFF
Duck Creek	11	WWSF
Galloway Creek ¹	5	WWFF
Johnson Creek	17.5	WWSF
Koshkonong Creek Lower ¹	24	WWSF
Maunasha River ¹	32	WWSF
Mud Creek	8	LFF
Oconomowoc River ¹	40	WWSF
Otter Creek ¹	16	WWSF
Rock Creek	0 – 1.5	LFF
	1.5 – 4.9	WWSF
Rock River ¹	56	WWSF
Scuppernong River	0 – 13	WWSF
Spring Creek ¹	5	WWFF
Steel Brook ¹	0 – 1.7	WWFF
	1.7 – 6	COLDIII
Stoney Brook ¹	15	WWSF
Whitewater Creek ¹	0 – 14	WWSF
	14 – 16	WWSF

Existing Use – indicates the biological use that the stream supports.

COLD – waters capable of supporting a community of Cold Water Fish and other aquatic life or that serve as a spawning area for Cold Water Fish species

COLD I – Cold Water Community, high-quality stream where populations are sustained by natural reproduction

COLD II – Cold Water Community, stream has some natural reproduction but may need stocking to maintain a desirable fishery

COLD III – Cold Water Community, stream has no natural reproduction and requires annual stocking of legal-size fish to provide sport fishing LFF – Limited Forage Fishery; waters capable of supporting only a limited community of tolerant forage fish and aquatic life; waters of limited capacity due to low flow, naturally poor water quality or poor habitat

LFF – Limited Forage Fishery; waters capable of supporting only a limited community of tolerant forage fish and aquatic life; waters of limited capacity due to low flow, naturally poor water quality or poor habitat

WWSF – waters are capable of supporting community of Warm Water Sport Fish or serving as a spawning area for these fish

WWFF – waters capable of supporting an abundant, diverse community of Warm Water Forage Fish and other aquatic life

1. Part of stream is located in another county.

Characteristics of Jefferson County Lakes

Name	Surface Area (acres)	Max Depth (feet)	Mean Depth (feet)	Shoreline Length (miles)	Watershed Area (sq. miles)	Public Access	Lake Type
Bean Lake	33	6		0.87	1.3	T	SE
Blue Spring Lake*	141	26	7	2.7	2.0	BR	SP
Golden Lake	250	46	13	3.6	2.0	BR	SP
Goose Lake	143	4		2.24	6.0	NO	DG
Hahns Lake	88	10	2	1.83	998.3	NW	DG
Haumerson Pond	4	3		0.5	342.6	R	SE
Hoopers Millpond*	21	6		1.23	21.7	R	DG
Hope Lake	126	24	5.4	1.97	2.1	BR	SE
Kurtz Pond	4	3		0.33	0.1	NO, S	DG
Lake Koshkonong*	10,460	7	5	27.3	2,543.7	BR	DG
Lake Ripley	418	44	18	4.1	7.3	BR	DG
Lower Spring Lake*	109	11	4	3.18	27.1	BR	DG
Mud Lake, Sumner	318			7	4.1	NW	
Mud Lake, Sullivan	0.3			0.09	2.2	NO	
Mud Lake, Lake Mills	95	22	7.4	1.67	8.3	BR, T	DG
Mud Lake, Concord	8	6		0.42	0.5	NO, S	DG
Perch Lake	5	7		0.46	0.1	NO, S	SE
Red Cedar Lake	336	6		4.96	2.3	BR, T	SE
Rock Lake	1,371	56	16	11.9	15.1	BR	DG
Rome Mill Pond*	448	7	2	13.63	111.7	BR	DG
Rose Lake	140	10		3.37	1.7	T	SE
Round Lake	2	3		0.26	0.1	NO, S	SE
Sindon/Weegs Pond	10	12		0.6	0.2	NO, S	DG
Spence Lake	33	6		1	0.4	T	
Upper Spring Lake*	24	11	4	1.78	25.0	NO	DG

* Impoundment

Lake Table Key Public Access

BR – Boat ramp

NO – No access

NW – Navigable water access to lake

Lake Hydrologic Types

R – Roadside access

T – Walk-in trail

X – Access not specified

Drainage Lake (DG): Impoundments and natural lakes with the main water source from stream drainage. Has at least one inlet and one outlet. **Spring Lake (SP):** Seldom has an inlet but always has an outlet of substantial flow. Water supply is dependent upon groundwater rather than surface drainage. **Seepage Lake (SE):** Landlocked. Water level maintained by groundwater table and basin seal. Intermittent outlet may be present.

Wildlife

Sport fish in Jefferson County lakes and streams includes walleye, northern pike, bluegill, white bass, muskie, crappie, largemouth bass, and smallmouth bass. The most common river fish found in Jefferson County are catfish, walleye, northern pike, white bass, sauger, panfish, crappie, and perch. Wetlands and water resources provide food and nesting for waterfowl and feeding and breeding habitat for fish species. Waterfowl frequent the County Parks and Wildlife Areas in Jefferson County during migration.

Deer and wild turkey are commonly seen throughout the County, as are coyote, fox, raccoon, opossum, rodents, turkey vultures, and a large variety of songbirds. Bald eagles have made a comeback and are seen more frequently.

In Jefferson County the Greater Lake Koshkonong Important Bird Area (IBA) designated by the Audubon Society, encompasses 80,000 acres including all of Lake Koshkonong and Koshkonong State Wildlife Area, Red Cedar Lake State Natural Area, and Rose Lake State Natural Area. The IBA program is dedicated to identifying the most critical habitats for birds in Wisconsin using science-based criteria, and maintaining and improving those habitats through voluntary, collaborative conservation and stewardship actions.

Lake Koshkonong continues to harbor large concentrations of waterfowl of over 20 species during both migratory periods. Recent surveys recorded over 20,000 ducks during spring migration.

The wetlands support herons and bitterns, Blue-winged Teal, Yellow-headed Blackbird, and significant numbers Black Tern and Marsh Wren. Sightings of American White Pelican have been increasing in recent years. Floodplain forests support Acadian Flycatcher, Eastern Wood-Pewee, and Prothonotary Warbler. Cerulean Warblers have been recorded in this area in the past.⁴

Rare, Threatened or Endangered Species

The following tables list the rare, threatened, or endangered species included in the Wisconsin Natural Heritage Inventory and that are known to have occurred or do occur in Jefferson County. These species are often clustered around water bodies.⁵

State Status: THR - Threatened, END - Endangered, SC - Special Concern, SC/P - Fully protected, SC/N - No protection, SC/H - Take regulated by open/closed seasons, SC/FL - Federally protected as endangered or threatened, SC/M - Protected by Migratory Bird Act.

Federal Status (in Wisconsin): LE-Listed as Endangered, LT-Listed as Threatened, C- Candidate for listing.

Animals

Scientific Name	Common Name	State Status	Federal Status	Group Name
Acipenser fulvescens	Lake Sturgeon	SC/H		Fish
Acris blanchardi	Blanchard's Cricket Frog	END		Amphibian
Aflexia rubranura	Red-tailed Prairie Leafhopper	END		Leafhopper
Alasmidontavirdis	Slippershell Mussel	THR		Mussel
Bartramia longicauda	Upland Sandpiper	THR		Bird
Bird Rookery	Bird Rookery	SC		Other
Chlidonias niger	Black Tern	END	SOC	Bird
Cymbiodyta toddi	A Water Scavenger Beetle	SC/N		Beetle
Dichromorpha viridis	Short-winged Grasshopper	SC/N		Grasshopper
Empidonax virescens	Acadian Flycatcher	THR		Bird
Emydoidea blandingii	Blanding's Turtle	SC/P	SOC	Reptile
Enallagma basidens	Double-striped Bluet	SC/N		Dragonfly
Erimyzon sucetta	Lake Chubsucker	SC/N		Fish
Etheostoma microperca	Least Darter	SC/N		Fish

⁴ Audubon Society. Important Bird Areas.

<http://iba.audubon.org/iba/viewSiteProfile.do?siteId=3656&navSite=state>

⁵ Wisconsin Department of Natural Resources. Natural Heritage Inventory. Endangered, Threatened, and Special Concern Plants and Animals and Native Natural Communities in Jefferson County.

Animals (Continued)

Scientific Name	Common Name	State Status	Federal Status	Group Name
Falco peregrinus	Peregrine Falcon	END		Bird
Flexamia prairiana	A Leafhopper	SC/N		Leafhopper
Geothlypis Formosa	Kentucky Warbler	THR		Bird
Ixobrychus exilis	Least Bittern	SC/M		Bird
Lythrurus umbratilis	Redfin Shiner	THR		Fish
Moxostoma carinatum	River Redhorse	THR		Fish
Myotis lucifugus	Little Brown Bat	THR		Mammal
Notropis anogenus	Pugnose Shiner	THR		Fish
Noturus exilis	Slender Madtom	END		Fish
Nycticorax nycticorax	Black-crowned Night-Heron	SC/M		Bird
Papaipema beeriana	Liatris Borer Moth	SC/N		Moth
Papaipema silphii	Silphium Borer Moth	END		Moth
Protonotaria citrea	Prothonotary Warbler	SC/M		Bird
Regina septemvittata	Queensnake	END		Snake
Schinia lucens	Leadplant Flower Moth	SC/N		Moth
Setophaga cerulean	Cerulean Warbler	THR	SOC	Bird
Setophaga citrina	Hooded Warbler	THR		Bird
Thamnophis butleri	Butler's Gartersnake	SC/H		Reptile
Thamnophis proximus	Western Ribbonsnake	END		Reptile
Venustaconcha ellipsiformis	Ellipse	THR		Mussel

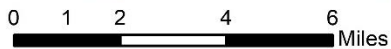
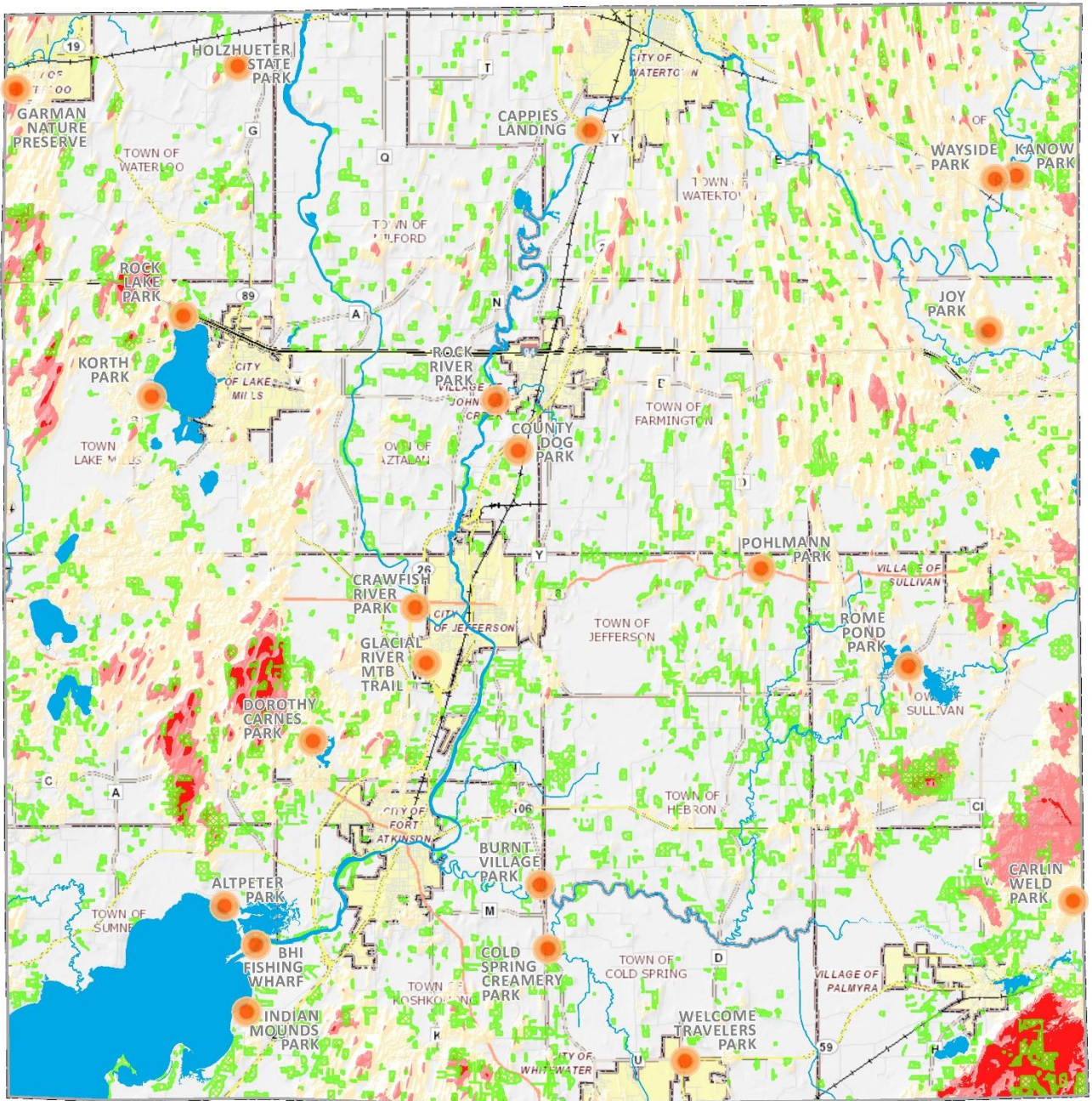
Plants

Scientific Name	Common Name	State Status	Federal Status	Group Name
Agrimonia parviflora	Swamp Agrimony	SC		Plant
Anticlea elegansssp.glaucus	White Camas	SC		Plant
Arnoglossum plantagineum	Prairie Indian-plantain	SC		Plant
Artemisia frigida	Prairie Sagebrush	SC		Plant
Asclepias hirtella	Green Milkweed	SC		Plant
Asclepias purpurascens	Purple Milkweed	END		Plant
Asclepias sullivantii	Prairie Milkweed	THR		Plant
Besseyia bullii	Kitten Tails	HR		Plant
Cacalia tuberosa	Prairie Indian-Plantain	THR		Plant
Calylophus serrulatus	Yellow Evening Primrose	SC		Plant
Carex suberecta	Prairie Straw Sedge	SC		Plant
Cirsium hillii	Hill's Thistle	THR	SOC	Plant
Cuscuta glomerata	Rope Dodder	SC		Plant
Cuscuta pentagona	Field Dodder	SC		Plant
Cypripedium candidum	White Lady's-slipper	THR		Plant
Drosera linearis	Linear-leaved Sundew	SC		Plant
Eleocharis compressa	Flat-stemmed Spike-rush	SC		Plant
Eleocharis quinqueflora	Few-flowered Spike-rush	SC		Plant
Epilobium strictum	Downy Willow-herb	SC		Plant
Euerybia furcate	Forked Aster	THR		Plant
Nuphar advena	Yellow Water Lily	SC		Plant
Oenothera serrulata	Yellow Evening Primrose	SC		Plant
Platanthera flavavar.herbiola	Pale Green Orchid	THR		Plant
Platanthera leucophaea	Eastern Prairie White-fringed Orchid	END	LT	Plant
Polygala incarnata	Pink Milkwort	END		Plant
Scutellaria ovata ssp. ovata	Heart-leaved Skullcap	SC		Plant
Spiranthes magnicamporum	Great Plains Lady's-tresses	SC		Plant
Triantha glutinosa	False Asphodel	THR		Plant

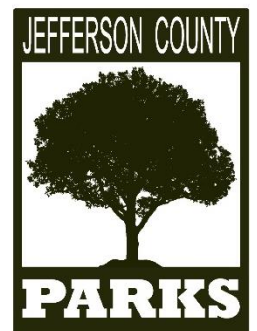
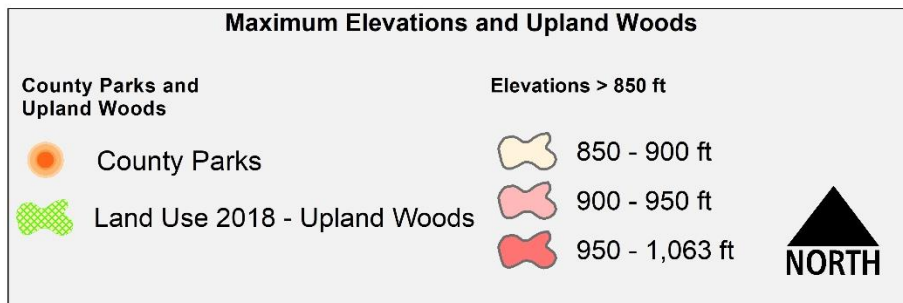
<u>Plants (Continued)</u>	Common Name	State Status	Federal Status	Group
Name				
Scientific Name				
Triphora trianthophora	Nodding Pogonia	SC	Plant	
Valeriana edulis var. ciliate	Hairy Valerian	SC	Plant	

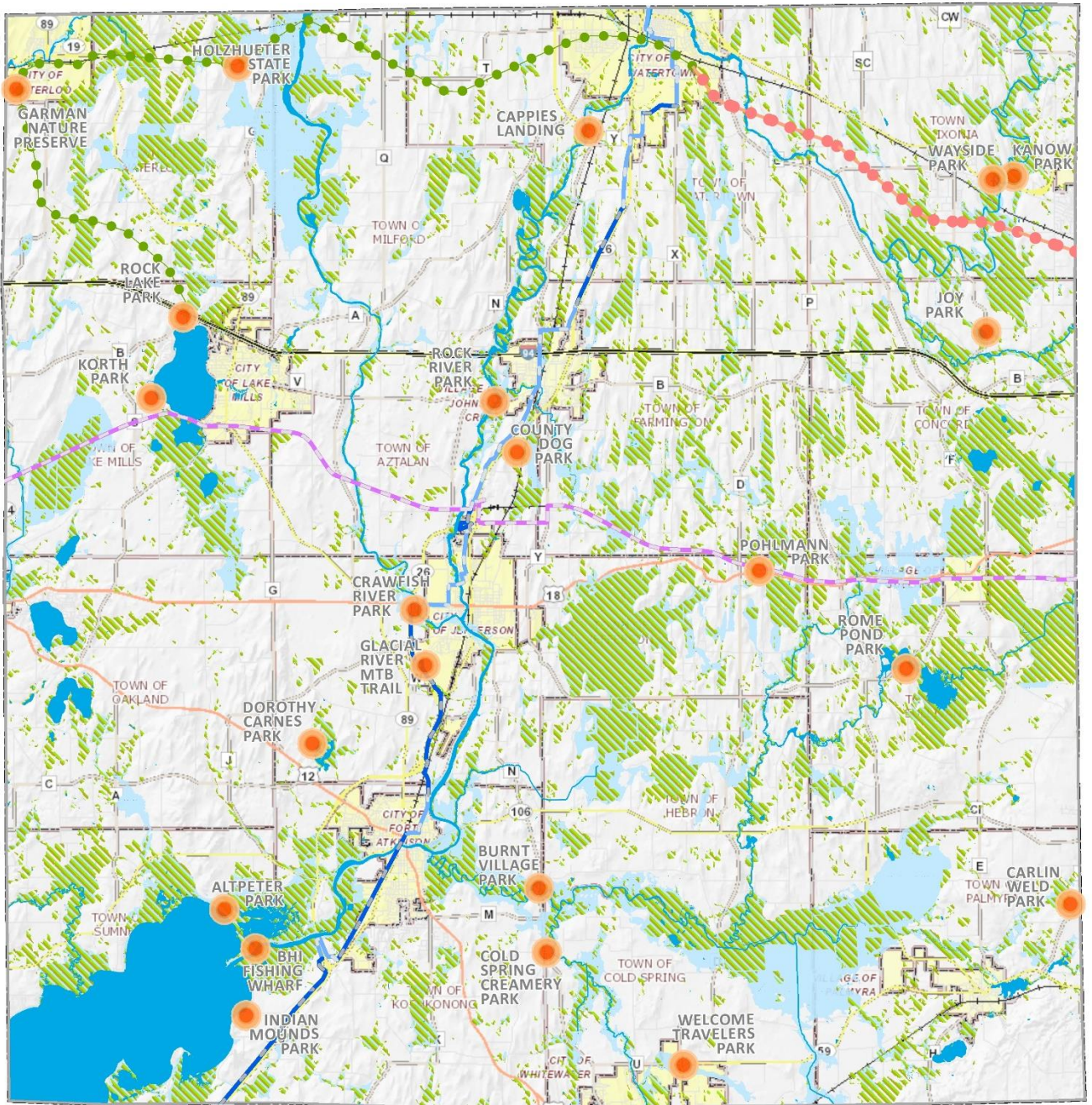
Communities

Calcareous fen
 Dry prairie
 Emergent marsh
 Floodplain forest
 Lake--hard bog
 Lake--shallow, hard, drainage Community
 Lake--shallow, hard, seepage Community
 Oak opening Community
 Open bog Community
 Shrub-carr Community
 Southern dry forest Community
 Southern dry-mesic forest Community
 Southern mesic forest Community
 Southern sedge meadow Community
 Springs and spring runs, hard Community
 Stream--slow, hard, warm Community
 Submergent Marsh
 Wet prairie Community
 Wet-mesic prairie Community



Document Name: 2018 Land Use Inventory
 Jefferson County Land & Water Conservation Dept.
 Date: 7/29/2020



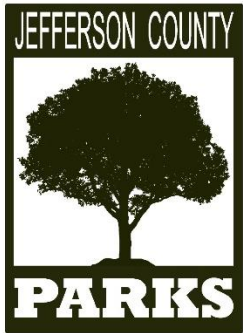


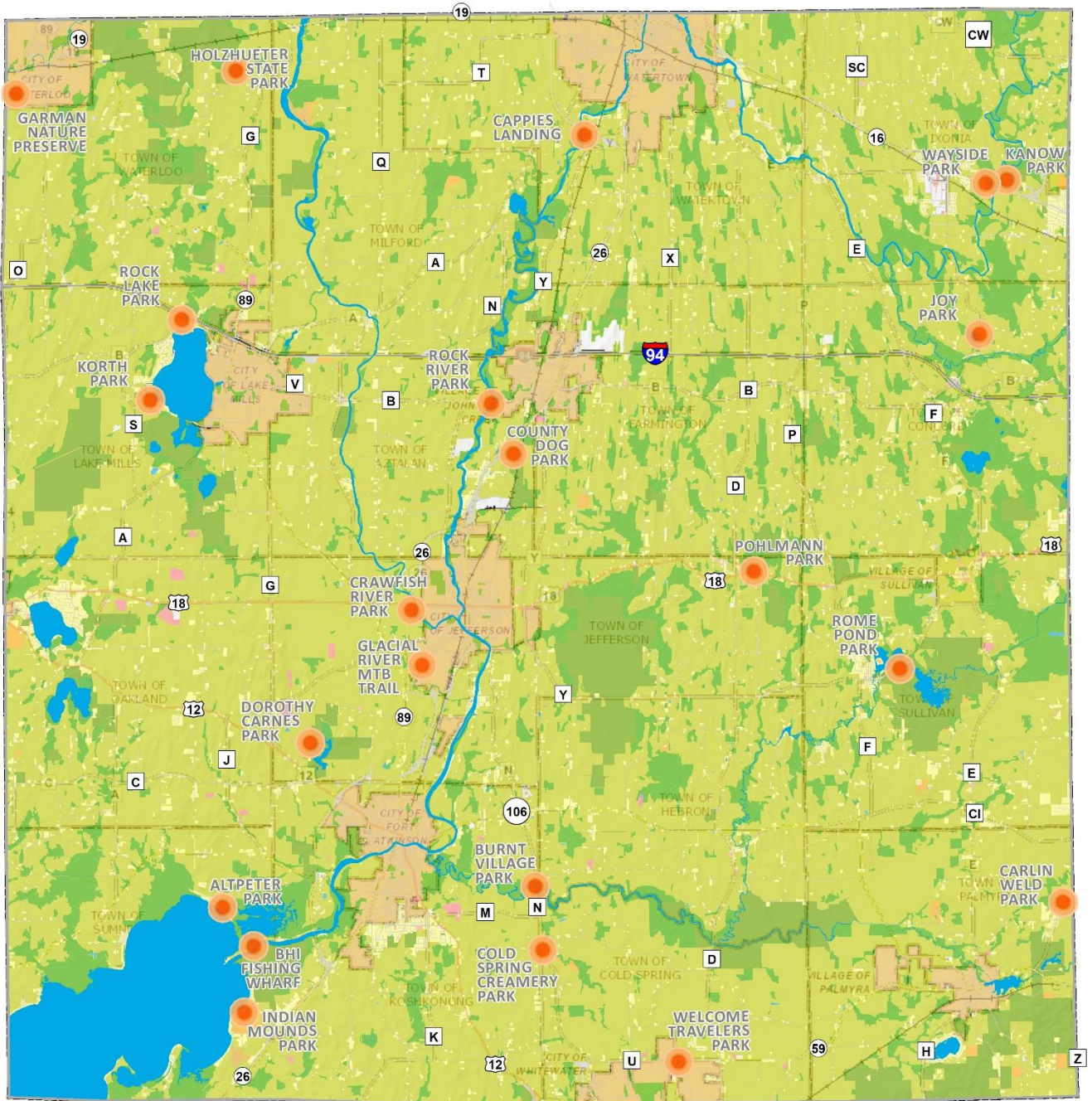
0 1 2 4 6 Miles

Document Name: 2018 Land Use Inventory
 Jefferson County Land & Water Conservation Dept.
 Date: 7/20/2020

Wetlands & Floodplain

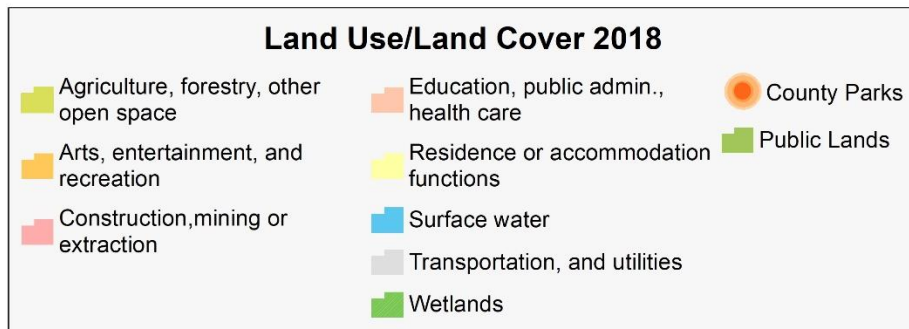
-  County Parks
-  Surface Water - DNR
-  Wetlands - DNR
-  100 Year Floodplain - FEMA 2015
-  Interurban Bike Route
-  Planned Linking Bike Trails
-  Glacial River Trail - Off Road
-  Glacial River Trail - On Road
-  Glacial Drumlin Trail





0 1 2 4 6 Miles

Document Name: 2018 Land Use Inventory
 Jefferson County Land & Water Conservation Dept.
 Date: 7/20/2020



Appendix I – Planning Context

This Appendix provides short summaries of the most pertinent planning documents from recent years. The most far-reaching plan is the *Glacial Heritage Area Plan* that was developed by the Wisconsin Department of Natural Resources under the direction of the Glacial Heritage Area External Advisory Team. After participating in the WDNR's Land Legacy project, Joe Nehmer, Director of the Parks Department and Steve Grabow, UW-Extension Community Development Educator, became champions of creating a string of conservation parks in Jefferson County linked to each other and municipalities by off-road trails. The resulting Glacial Heritage Area covers parts of four counties and 26 Townships.

In addition to the plans summarized in this section, master plans for the following Parks and Trails have been completed:

- Crawfish River Park
- Dorothy Carnes County Park
- Holzhueter State Park
- Korth County Park
- Dr. J.S. Garman Nature Preserve
- Jefferson County Dog Park
- Watertown to Waterloo Bicycle Trail
- Watertown to Oconomowoc Bicycle Trail

Plan Summaries

Jefferson County Parks, Recreation, and Open Space Plan 2013 - 2018

The focus of the 2013 *Jefferson County Parks, Recreation and Open Space* plan was to preserve natural resources while providing outdoor recreation and creating a network like pearls on a string of parks and trails that connect to cities, villages, and hamlets throughout Jefferson County. The *Glacial Heritage Area Plan* supplemented County Planning.

The mission and visions for the Parks Department were expanded to include implementation strategies and an extensive Capital Plan. A new brochure was developed to summarize past accomplishments, create awareness of the mission and visions, list priority projects, and provide a guide to the parks.

Jefferson County Park Site Feasibility Study, 1998

The *Feasibility Study* identified thirty-five potential new park areas and developed a decision making matrix and rating system for park site selection. Dorothy Carnes County Park and Korth County Park, among the top ten sites, have been acquired as County Parks. The Holtzheuter Farm has been acquired by the WDNR and is a state park under development.

Glacial Heritage Area Plan

(Text from the *Jefferson County Agricultural Preservation and Land Use Plan*)

Owing to a rich natural resource base, Jefferson County is within a region that the Wisconsin Department of Natural Resources (WDNR) has designated as a high priority location to expand and enhance natural resource-oriented trails, parks, and open spaces. Glacial Heritage Area (GHA) project will link parks, reserves, wildlife and natural areas, and other conservation lands to nearby cities and villages with different types of trails (Figure III-1). This designation and associated efforts position the County to capitalize on the growing recreation and tourism economies. The GHA Plan is, in essence, implementation of the 2005-2010 *Jefferson County Parks, Recreation and Open Space Plan*.

Preservation of natural resource lands through the GHA effort can complement and support agricultural operations by limiting less compatible uses, such as housing developments, that are often attracted to these areas. WDNR intends to work with agricultural agencies and organizations to maintain and protect lands adjacent to proposed acquisition areas (and also buffer parks from urban land uses). Lands incorporated into such areas could buffer working farmlands from adjacent development, which may lead to fewer public trespass issues and complaints about farm practices. The following four types of places are proposed to make up the GHA network:

Conservation Parks. The primary purpose of the conservation parks is to provide high quality opportunities for residents and visitors to engage in a range of outdoor activities. In particular, the parks are intended to offer hiking, biking, mountain biking, horseback riding, and cross-country skiing trails and associated facilities such as picnic areas and places to watch wildlife. A total of ten parks and preserves currently exist in the area. The GHA plan proposes to expand five of these and to establish seven new parks to provide a broader range of outdoor experiences. Most conservation parks are proposed to eventually range from 200 to 700 acres.

Linking Trails. Approximately 100 miles of linking trails are proposed to meander through the countryside and connect the conservation areas to the nearby cities and villages. The linking trails would offer longer distance biking, horseback riding, and cross-country skiing opportunities on relatively flat lands, either off-road or separated from vehicle traffic, and suitable for people with a range of abilities, including children and seniors. Most trails would be within narrow corridors with surfaces of packed gravel, asphalt, or grass or a mix for different trail users.

Wildlife and Natural Areas. The GHA plan proposes to expand the eleven State Wildlife Areas and create a Red Cedar Lake State Natural Area to protect and restore additional native habitats, provide better public access and more recognizable boundaries, increase public hunting and trapping opportunities, and provide additional opportunities for rustic outdoor recreation. The plan also proposes to establish one new property – the Crawfish Prairie Habitat Area – which would provide critically needed habitat for grassland birds and other species. In addition, the plan proposes to buffer many of the Wildlife Areas with farming dominated areas, referred to as Rural Landscape Protection Areas.

River-based Conservation Areas. Two types of lands along rivers and creeks would be part of the GHA. First is a set of 5 to 10 acre sites, and potentially one or two larger sites, to provide access for boaters, paddlers, and shore anglers. These areas might include parking, boat launches, picnic areas, pit toilets, and other simple facilities. The larger sites could provide rustic campsites accessible only from the water. The second component would focus on natural resource protection: high-quality wetlands and floodplain forests along the Bark River, Koshkonong Creek, and Allen Creek. These areas harbor diverse native communities and populations of several rare plant and animal species.

To date, as a result of the *Glacial Heritage Area Plan*, two projects are underway: the Holzheuter Farm State Park near Waterloo was purchased by the WDNR as a conservation park with proposed mountain bike trails; and the Glacial River Trail off-road bicycle and pedestrian trail was expanded along the STH 26 bypass between Fort Atkinson and Jefferson and on-road sections to Watertown have been marked. The trail will be maintained by Jefferson County. Land has been purchased to complete an off-road section of the Glacial Drumlin State Trail north of Jefferson.

Canoe/kayak Put-In-Take-Out sites are posted on Glacial Heritage Area Watertrails and some streams, such as portions of the Bark River and Koshkonong Creek, have been cleared of debris for more pleasurable paddling. This plan has been the impetus for expanding recreational activities and economic development in Jefferson County.

The *Glacial Heritage Area Plan* is an implementation of recommendations of the *Wisconsin Land Legacy Report*. This report assessed the State's protection needs for conservation and recreation lands over the next fifty years. The study focused on identifying what significant "green infrastructures" remain in need of protection. The places identified in this report are considered important from a statewide or national perspective.

Five Legacy Places in Jefferson County were included in the *Land Legacy Report*. Those places include the Crawfish River-Waterloo Drumlins, the Jefferson Marsh, the Lake Koshkonong to Kettle Moraine Corridor, the Bark and Scuppernong Rivers, and the Upper Rock River.

Over fifty percent of Wisconsin's population lives within 50 miles of the area bounded by Milwaukee, Madison, Fond du Lac, and Janesville and development pressure is changing the landscape in this region. Participants in public meetings pertaining to the plan indicate that they would like recreational opportunities near where they live.

Jefferson County Bicycle Plan Emphasis Summary

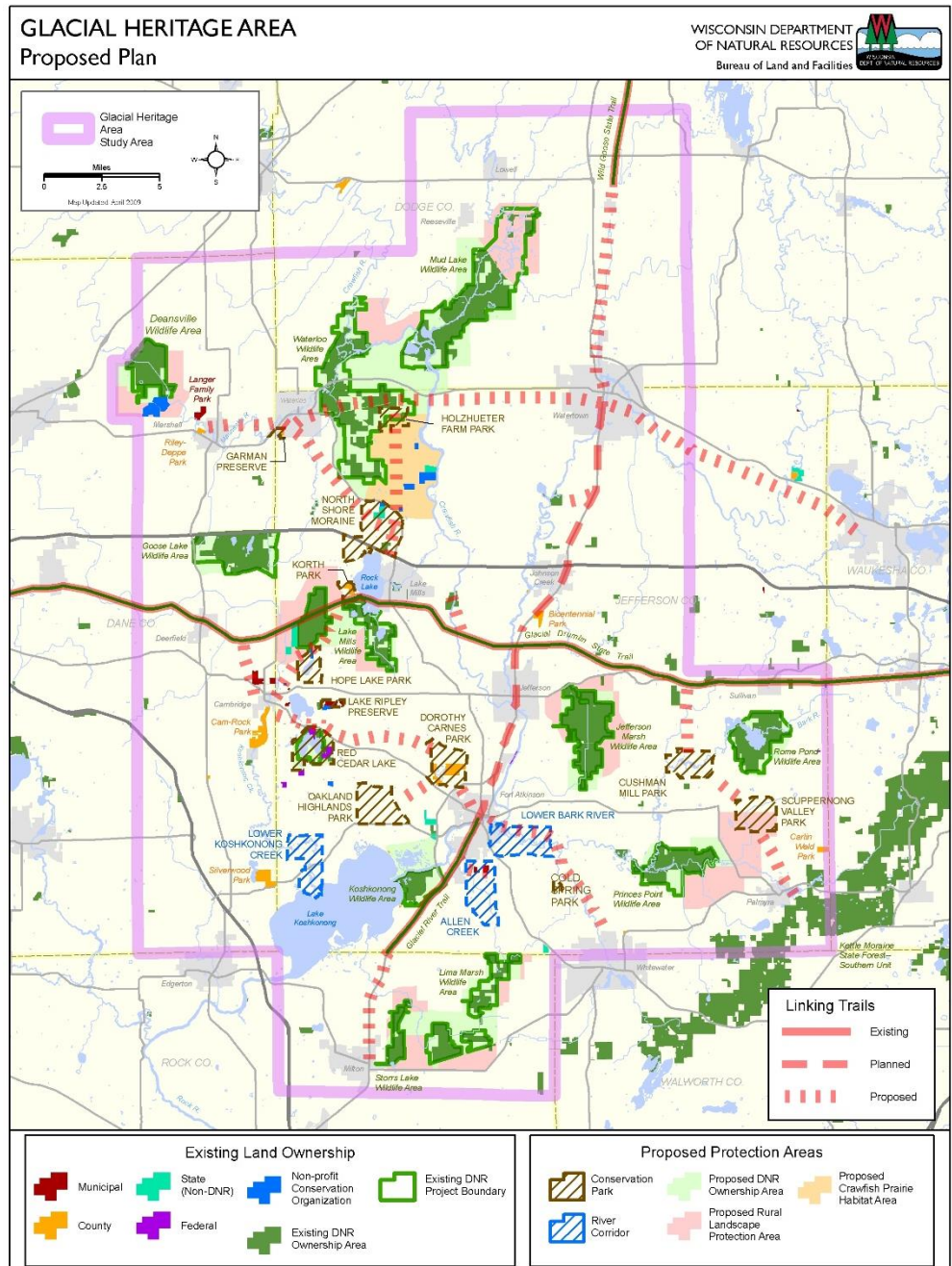
Bicycle and pedestrian trails expanded rapidly in Jefferson County since approval of the *Glacial Heritage Area Plan*. This update to the 1996 *Jefferson County*

Bicycleway/Pedestrianway Plan assessed the existing bicycle routes within Jefferson County and its communities and addressed route effectiveness, connectivity to key destinations, and safety. Off-road bike trails were identified that link Glacial Heritage Area (GHA) and local destinations and estimated costs and funding sources for future implementation of recommended improvements were identified.

The Rock River Trail Initiative

This trail initiative began in 2010 and was joined by public and private partners in Wisconsin in 2011. The mission is to establish and interpret a Rock River water trail along the 320-mile river course from the headwaters in Fond du Lac and Dodge counties to the Mississippi River at Rock Island in Illinois. The group is also looking to create a

Figure 3.1



separate Rock River route on roads within the river corridor to provide access to the natural resources, recreational opportunities, scenic beauty and historic and cultural assets of the Rock River Valley. The Rock River Trail has been designated part of the National Water Trail System by Secretary of the Interior Ken Salazar and is promoted by the National Parks Service.

Jefferson County Agricultural Preservation and Land Use Plan, 2012

In 2010 a comprehensive plan update with an economic emphasis identified three visions for the economic health of Jefferson County: home grown businesses, enterprising agriculture, and small town magnetism. The *Jefferson County Agricultural Preservation and Land Use Plan* was updated in 2012 and focuses on preserving productive farmland and implements new State land use directives. Changes that may pertain to parks include updates to the mapping criteria for environmental corridors and the purpose of environmental corridors:

- Protect and preserve an environmental corridor system consisting of wetlands, floodplains, and steeply sloped glacial features.
- Protect groundwater and surface water quality.
- Discourage development in areas that possess valuable natural resource characteristics and wildlife habitats. (A development density not greater than one residence per 10 acres is allowed within the environmental corridor overlay.)
- Identify certain areas that are being farmed today, which also have natural resource features or limitations.

Parks and farming are compatible land uses. The plan recommends that parks departments and farmland preservation efforts partner in Glacial Heritage Area initiatives in order to buffer parks, wildlife areas, and farms from development.

Jefferson County Lake Enhancement Project

This document makes several recommendations for lakes that might be considered from a park planning perspective including:

- Increase water quality monitoring on lakes
- Reduce the incidence of shoreline vegetation cutting
- Restoration of native shoreline buffers
- Education on exotic and invasive species
- Monitoring for exotic and invasive species
- Controlling non-point source pollution
- Developing a booklet of lake recreation

Jefferson County Land and Water Resources Plan 2011-2020

The *Land and Water Resources Plan* makes recommendations for protecting productive soils in Jefferson County and improving water quality and habitat along water bodies. These goals refer to Park initiatives and management:

- Achieve measurable progress on protecting the resources in Jefferson County through implementation of conservation practices and conservation plan development.
- Ensure compliance with the Agricultural Performance Standards and Prohibitions – could apply to land within parks that is currently farmed.
- Adequately address the water resource issues facing Jefferson County, including protect the natural areas encompassing rivers and streams.
- Protect and restore identified natural areas.
- Preserve and enhance woodland areas.
- Work with the Department of Natural Resources to implement various wildlife programs

Appendix II – Grants and Funding

Wisconsin Department of Natural Resources Knowles-Nelson Stewardship Program Grants

July 1, 2020 <https://dnr.wi.gov/topic/stewardship/grants/>

WDNR South Central Region Grant Contacts:

Local Government Contact

Cheryl Housley
3911 Fish Hatchery Rd.
Fitchburg, WI 53711
Phone 608-275-3218
Fax 608-275-3315
Cheryl.Housley@wisconsin.gov

NCO Contact (Non-profit Conservation Organization)

Mary Rothenmaier
3911 Fish Hatchery Rd.
Fitchburg, WI 53711
Phone 608-275-3322
Fax 608-275-3315
Mary.Rothenmaier@wisconsin.gov

Local Units of Government Grants

Local units of government (LUGs) are eligible applicants for four Stewardship grant programs and two related federal programs. The annual application deadline is **May 1** for the grant programs listed below. Nonprofit conservation organizations (NCOs) are eligible to apply to the Stewardship Local Assistance Grant Program for land acquisition projects.

"Nature based outdoor recreation" means hunting, trapping, fishing, hiking, cross country skiing and other activities where the primary focus or purpose is the appreciation or enjoyment of nature. These other activities may include, but are not limited to, hiking, bicycling, wildlife or nature observation, camping, nature study, fishing, hunting, picnicking, cross-country skiing, canoeing and multi-use trail activities.

Support facilities for these activities may include, but are not limited to, access roads, parking areas, camping facilities, support facilities for swimming in a natural water body, habitat restoration, utility and sanitation systems, sanitary and shelter buildings, signs, interpretive items, and fencing and lighting for the protection of users and other features that enhance nature-based outdoor recreation and/or improve disabled accessibility.

Knowles-Nelson Stewardship local assistance grant programs:

- Aids for the Acquisition and Development of Local Parks (ADLP)
- Urban Green Space (UGS) grants
- Urban Rivers (UR) grants
- Acquisition of Development Rights (ADR)

Stewardship LUG, LWCF and RTP grant programs require that all land acquisition and development projects provide public access for outdoor recreation purposes. Stewardship LUG grant projects support nature-based outdoor recreation activities. LWCF grants can also fund active outdoor recreation facilities (e.g. ballfields, splash pads, etc.). RTP grants focus on trail maintenance and development activities.

LUG, LWCF, & RTP grants support a wide variety of outdoor recreation projects throughout the state. Common projects funded through these grant programs include:

- Land acquisition for parks & trails, including riverfront property
- Construction of hiking trails and bike paths
- Construction of canoe/kayak launches, including those that provide universal accessibility
- Construction of riverfront park amenities
- Construction of park shelters and restroom facilities

Although these are the most common type of Stewardship LUG grant projects, the Department welcomes innovative projects that utilize Stewardship funds.

Federal Grants Administered Through the Stewardship Program

North American Wetlands Conservation Act Grants (NAWCA)

North American Wetlands Conservation Act (NAWCA) grants increase bird populations and wetland habitat, while supporting local economies and American traditions such as hunting, fishing, bird watching, family farming, and cattle ranching. Wetlands protected by NAWCA provide valuable benefits such as flood control, reducing coastal erosion, improving water and air quality, and recharging ground water. The NAWCA program provides matching grants to wetlands conservation projects in the United States, Canada, and Mexico. There is a Standard and a Small Grants Program. Both are competitive grants programs and require that grant requests be matched by partner contributions at no less than a 1-to-1 ratio.

The NAWCA program operates in two cycles per year. Each cycle, eligible proposals are reviewed and ranked by the North American Wetlands Conservation Council, a nine-member council established by the Act. The Council may directly approve Small Grants. The Council recommends Standard Grants projects to the Migratory Bird Conservation Commission, a seven-member commission authorized by the Act to give final funding approval.

See website for details: <https://www.fws.gov/birds/grants/north-american-wetland-conservation-act.php>

Rivers, Trails, and Conservation Assistance Program – National Parks Service

The National Park Service Rivers, Trails, and Conservation Assistance program supports community-led natural resource conservation and outdoor recreation projects across the nation. Our national network of conservation and recreation planning professionals partners with community groups, nonprofits, tribes, and state and local governments to design trails and parks, conserve and improve access to rivers, protect special places, and create recreation opportunities.

Contact: David Thomson, Program Manager Email: mwr_rtca@nps.gov

Nonprofit Conservation Organization Stewardship Grants

Nonprofit conservation organizations (NCOs) may apply for funding from eight Stewardship grant subprograms to help fund the acquisition of land and conservation easements. Nonprofit Conservation Organizations are eligible applicants for the following four grant subprograms:

- Natural areas
- Habitat areas
- Stream Bank protection
- State trails

Wisconsin Department of Natural Resources

Non-Stewardship Program Grants

July 1, 2020 <https://dnr.wi.gov/Aid/Grants.html>

Angler Recruitment, Retention and Reactivation Grant Program

The Angler Recruitment, Retention, and Reactivation (Angler R3) grant program provides financial assistance to partners who conduct Angler R3 programs and activities in Wisconsin. Funding is provided through the Dingell-Johnson Sportfish Restoration Act, a federal aid program.

The goals of the Angler R3 grant program are to grow the numbers of anglers in Wisconsin and expand angling participation among adults, particularly from non-traditional audiences. To achieve these goals, the Department of Natural Resources (DNR) will award cost-sharing funds to community based organizations, community centers, government agencies, Wisconsin tribes, colleges, universities and schools to ensure the education and development of safe and ethical adult anglers. **Grant awards may be up to 75% share of total eligible project costs.**

Eligible Items

- Salaries, hourly wages, and fringe benefits for applicant employees
- Consultant services
- Purchased services – printing, mailings, room rental
- Other purchased services (specify in grant application)
- Office or project supplies (specify in grant application)
- Project's programming supplies, such as fishing gear (specify in grant application)
- Background checks of mentors and instructors (required)
- Equipment purchase (defined as items that cost \$5,000 or more)
- Hourly equipment rental charges (specify in grant application)
- Other (specify in grant application; e.g. bus or van rental to transport classes for fishing outings)

Application deadline: September 15th of odd number years (example: 2021)

Contact: Angler R3 Grant Program manager Karen Blodgett at 715-839-3730.

ATV/UTV Trails

Counties, towns, cities, villages and tribes can apply for funds to acquire, insure, develop and maintain ATV/UTV trails, areas and routes.

Eligible items and funding levels

- All terrain vehicle trails available for spring, summer, and fall reimbursable up to 100 percent of eligible maintenance costs; max: \$600 per mile
- All terrain vehicle trails available for winter riding reimbursable up to 100 percent of eligible maintenance costs; max: \$100 per mile
- Development of ATV trails and areas reimbursable up to 100 percent of eligible costs
- Major rehabilitation of bridge structures or trails reimbursable up to 100 percent of eligible costs
- Maintenance of ATV intensive use areas reimbursable up to 50 percent of eligible costs.

Applications are due in the regional offices by April 15 for the following season

Contact:

Jillian Steffes
107 Sutliff Ave
Rhineland, WI 54501
(715) 210-4911

ATV Enhancement

This funding is issued bi-annually to **non-profit organizations** that promote the safe and wise use of all terrain vehicles (ATVs)/utility-terrain vehicles (UTVs), ATV/UTV riding and ATV/UTV education.

Contact April Dombrowski for details and application materials.

Citizen-based Monitoring Partnership Program

To expand citizen and volunteer participation in natural resource monitoring by providing funding and assistance with high priority projects. Qualifying topics include monitoring of aquatic and terrestrial species, natural communities and environmental components such as water, soil and air. Maximum grant amount: \$4,999

Deadline: request for proposals in the spring

Contact: Eva Lewandowski, 608-264-6057

County Conservation Aids

County conservation grants provide financial assistance to enhance county/tribal fish and wildlife programs. This Fish and Wildlife Management Grant Program was created to assist counties in the improvement of the fish and

wildlife resources. The fund was established by the Wisconsin Legislature in 1965 as an alternative to bounty payments on coyote, foxes and bobcats. Every year since the bounty program was cancelled, a state allocation equal to the average annual bounty payment has been earmarked as matching money for a growing list of county-sponsored fish and wildlife habitat projects. After the state budget is approved, funds are allocated to each county in proportion to the ratio of the size of each county to the total area of the state.

Application deadline of October 1.

Contact:

Beth Norquist, Grant Manager
WI Dept of Natural Resources
1300 W Clairemont Ave
Eau Claire, WI 54701
715-839-3751

Hunter R3 (Recruitment, Retention and Reactivation) Grant Program

Formerly known as the Hunter Recruitment, Development, Training and Education Grant Program

In order to focus hunter training, development, and education programs on adults, females and families, WDNR has developed this new grant opportunity. There is a great need for strategically developed, tested programs and results on which to base future program priorities. The Hunter Recruitment, Retention and Reactivation (R3) Grant program will also focus on developing and pilot testing various programs and evaluating effectiveness of those programs. The primary purpose of the Hunter Recruitment, Retention and Reactivation (R3) grant program is to provide cost sharing grants to local clubs, organizations, communities, governments, Wisconsin Tribes, colleges, universities, and technical schools to ensure the education, training and development of safe and ethical hunters and mentors with preference towards applicants focusing on adults, females and families.

Application deadline September 15 in odd numbered years.

Contact:

Emily Iehl	Karen Blodgett
Hunting & Shooting Sports Coordinator	Program Grant Manager
608-445-8168	715-839-3730

Land and Water Conservation Fund (LWCF) Program

This is a federal program administered in all states that encourages creation and interpretation of high-quality outdoor recreational opportunities. Funds received by the DNR for this program are split between DNR projects and grants to local governments for outdoor recreation activities. Grants cover 50 percent of eligible project costs.

Eligible projects

- Land acquisition or development projects that will provide opportunities for public outdoor recreation.
- Property with frontage on rivers, streams, lakes, estuaries and reservoirs that will provide water based outdoor recreation.
- Property that provides special recreation opportunities, such as floodplains, wetlands and areas adjacent to scenic highways.
- Natural areas and outstanding scenic areas, where the objective is to preserve the scenic or natural values, including wildlife areas and areas of physical or biological importance. These areas shall be open to the general public for outdoor recreation use to the extent that the natural attributes of the areas will not be seriously impaired or lost.
- Land or development within urban areas for day use picnic areas.
- Land or development of nature-based outdoor recreation trails.
- Development of basic outdoor recreation facilities.
- Renovation of existing outdoor recreation facilities which are in danger of being lost for public use.

Application deadline of May 1.

Contact:

Sharene Smith, Regional Real Estate Supervisor
3911 Fish Hatchery Road
Fitchburg, WI 53711
608-275-3314

Municipal Flood Control Grant Program

This grant is available to all cities, villages, towns, tribes and metropolitan sewerage districts. Assistance is provided with items such as: the acquisition of property, vacant land, structure removal, flood proofing, administrative support and others. **Next application deadline March 15, 2022.**

Recreational Boating Facilities Grants

These grants may be used by counties, towns, cities, villages, tribes, sanitary districts, public inland lake protection and rehabilitation districts and qualified lake associations for recreational boating facility project. Past projects have included ramps and service docks to gain access to the water, purchase of aquatic weed harvesting equipment, navigation aids and dredging waterway channels. DNR provides cost sharing of up to 50 percent for eligible costs.

Applications accepted anytime.

Eligible projects

- Channel dredging - Dredging of inland water channels for recreational boating (not more than once in ten years).
- Construction projects
- Facilities such as ramps and boarding docks required to gain access to the water.
- Harbors of refuge – structures such as bulkheads and breakwaters necessary to provide safe water conditions.
- Dredging to provide safe water depths. Dredging of basins is an eligible activity only when it is associated with project development.
- Support facilities include parking lots and signage, sanitary facilities, fencing and security lighting for the convenience of boaters.
- Improvement and repair of locks - Cost of improvement and repair of locks and facilities that provide access between waterways for operators of recreational watercrafts.
- Navigation aids - Cost of aids to navigation and regulatory markers including the cost of appropriate ground tackle.
- Rehabilitation - Rehabilitation of capital improvements that are related to recreational boating facilities.
- Trash skimming equipment - Acquisition of equipment to collect and remove floating trash and debris from a waterway.
- Weed harvesting equipment - Acquisition of equipment that is necessary to cut and remove aquatic plants.

Contact:

Cheryl Housley
3911 Fish Hatchery Road
Fitchburg, WI 53711
(608) 275-3218
cheryl.housley@wisconsin.gov

Recreational Trails Program (RTP)

This is a federal program administered in all states. Municipal governments and incorporated organizations are eligible to receive reimbursement for development and maintenance of recreational trails and trail-related facilities for both motorized and non-motorized recreational trail uses. Eligible sponsors may be reimbursed for up to 50 percent of eligible project costs. Funds from this program may be used in conjunction with funds from the state snowmobile or ATV grant programs and Knowles-Nelson Stewardship development projects.

Eligible projects

Eligible projects in order of priority are:

- Maintenance and restoration of existing trails;
- Development and rehabilitation of trailside and trailhead facilities and trail linkages;
- Construction of new trails (with certain restrictions on federal lands*); and
- Acquisition of easements and fee simple title to property for recreational trails or recreational trail corridors (must comply with the provisions of the Uniform Relocation Assistance and Real Property Acquisition Policies Act of 1970, as amended).

Applications are typically due on May 1 each year.

Contact

Bobbi Winebar
Department of Natural Resources
2984 Shawano Ave
Green Bay, WI 54313
(920) 662-5175

Shooting Range Grant Program

Counties, cities, villages, townships, other governmental agencies or units, clubs or organizations, businesses or corporations and educational institutions can apply for assistance in outdoor shooting range construction, including: backstops and berms, target holders, shooting benches, baffles, protective fencing, signs, trenches, gun racks, platforms, restrooms and other items considered essential for the project by the department. Indoor ranges may be eligible as well, including classroom, storage and restroom facilities.

Public and Private Shooting Range applications due September 15, 2020.

Contact

Bobbi Winebar, Program Grant Manager
920-662-5175

Emily Iehl, Hunting & Shooting Sports Coordinator
608-445-8168

Snowmobile Trail Aids

Snowmobile trail aids are entirely funded by snowmobilers. The money awarded in grants to Wisconsin Counties comes from snowmobile registrations, trail pass revenue and gas tax from some of the gas used in snowmobiles. These grants are used to reimburse the over 600 snowmobile clubs in Wisconsin for some of their expenses.

Apply by April 15 for maintenance and development projects.

Apply by August 1 for supplemental maintenance.

Contact Jillian Steffes, (715) 210-4911 with questions.

Sports Fish Restoration (SFR)

These grants may be used to construct fishing piers and motorboat access projects. Eligible components include boat ramp construction and renovation, along with related amenities such as parking lots, accessible paths, lighting and restroom facilities. Funding for this program comes from federal excise taxes on fishing equipment and a portion of the federal gas tax.

Eligible Projects

New boat ramp and fishing pier construction and renovations, development and renovation of parking lots, accessible paths, lighting and restroom facilities; channel dredging and feasibility studies. Matching contributions for these grants must be from non-federal sources.

Grant application materials for boat access projects must be submitted by February 1, 2020.

Grant application materials for fishing pier projects must be submitted by October 1, 2020.

Contact:

Donna Kempf, Grant Manager
414-263-8569

Stamp Funds - Wild Turkey, Pheasant and Waterfowl

To provide funding to support the development, maintenance, preservation, restoration and maintenance of each species and its associated habitat in Wisconsin. All non-profit conservation organizations and units of government are eligible to apply. Maximum grant amount: None. Funding is allotted in two-year cycles. On average, the following amount is available during each biennium: Wild Turkey = \$1.5 million; Pheasant = \$300,000; Waterfowl = \$700,000. Match requirement: 50% match required for equipment purchases using Pheasant Stamp. Otherwise, match is not required but is strongly recommended.

Deadline: Check website for next application deadline.

Contact:

Wild Turkey and Pheasant Stamp: Mark Witecha (upland wildlife ecologist), 608-261-8458; or Jacquelyn Waterfowl Stamp: Jason Fleener (wetland habitat specialist), 608-266-7408; or Eddie Shea (assistant wetland habitat specialist), 608-261-0775

Surface Water Grants

This program is undergoing changes.

The Surface Water Grant Program offers competitive, cost-sharing grants for surface water protection and restoration. Grants are available to support surface water management from start to finish. Whether your organization is interested in education, ecological assessments, planning, implementation or aquatic invasive species, there is probably a grant program that can help you accomplish your goals.

Aquatic Invasive Species (AIS) Prevention and Control Grants

AIS Prevention and Control Grants [PDF] share the costs of aquatic invasive species education programs that teach about the threats posed by invasive species and how to prevent and control them. These grants also help with projects that prevent new introductions, control existing populations, and restore habitat. Application due December 10. Here are five Aquatic Invasive Species Prevention and Control grants subprograms:

- Education, Prevention and Planning Projects (including Clean Boats Clean Waters) Apply by December 1.
- Early Detection and Response Projects Apply Year-round.
- Established Population Control Projects Apply by February 1
- Maintenance and Containment Projects Apply Year-round.
- Research and Demonstration Projects

Lake Management Planning Grants

Lake Management Planning Grants [PDF] help pay for developing management plans to protect and restore lakes and their watersheds. Often, these plans turn into projects funded with Lake Protection grants. There are two categories of lake management planning grants: small-scale and large-scale. Application due December 10.

Lake Protection Grants

Lake Protection Grants [PDF] assist eligible applicants with implementation of lake protection and restoration projects that protect or improve water quality, habitat or the elements of lake ecosystems. Applications are due February 1. There are four basic Lake Protection subprograms:

- Fee simple or Easement Land Acquisition
- Wetland and Shoreline Habitat Restoration
- Lake Classification and Local Ordinance Development
- Lake Plan implementation
- Healthy Lakes

Lake Classification and Local Ordinance Development Grants

Lake Classification and Local Ordinance Development Grants [PDF] help counties study lakes to assign them different management classifications in order to guide plans to protect lakes and their watersheds that use both regulatory and management strategies. Grants also help implement those plans. Application due December 10.

Local Ordinance Development grants help any unit of local government develop local regulations or ordinance projects to protect or improve a lake's water quality or its natural ecosystem. Lake Classification and Local Ordinance Development projects can be funded separately or jointly. Application due December 10.

River Protection Grants

River Protection Grants provide assistance in the formation of river management organizations and provides support and guidance to local organizations that are interested in helping to manage and protect rivers, particularly where resources and organizational capabilities may be limited. In addition, this grant program protects rivers by:

- providing information on riverine ecosystems;
- improving river system assessment and planning;
- increasing local understanding of the causes of river problems; and
- assisting in implementing management activities that protect or restore river ecosystems.

The River Protection Grants have three subprograms:

- River Planning. Application due December 10.
- River Management Application due February 1.
- Land/Easement Acquisition Application due February 1.

Lake Grants Coordinator

Susan Graham
3911 Fish Hatchery Rd.
Fitchburg WI 53711
608-275-3329 (ph.) 608-275-3338 (fax)
Susan.Graham@wisconsin.gov

Grants Specialist

Kurt Byfield
3911 Fish Hatchery Rd.
Fitchburg WI 53711
608-275-7760 (ph.) 608-275-3338 (fax)
Kurt.Byfield@wisconsin.gov

Wisconsin Habitat Partnership Fund

To help improve and expand quality wildlife habitat in Wisconsin, the DNR is continuing a program that seeks partnerships with local governments, Wisconsin Tribes, and nonprofit conservation organizations for habitat restoration and enhancement projects on public and private lands with the goal of increasing the amount and quality of land open for hunting, trapping, and wildlife viewing.

Eligible projects

Habitat projects benefitting wild birds and mammals are a priority for funding consideration. Desired projects include, but are not limited to:

- prairie restoration
- wetland restoration
- stream restoration
- reforestation/regeneration
- savanna restoration
- streambank stabilization
- timber stand improvement
- invasive species control
- wetland infrastructure upgrade or maintenance
- grassland mowing
- prescribed fire
- upland shrub maintenance

Applications are due by January 15th annually.

Contact

engineering and design work, construction costs including materials, labor, and equipment rental, and reasonable volunteer support costs. For advocacy projects, we will fund staffing that is directly related to accomplishing the goals of the initiative. PeopleForBikes accepts requests for funding of up to \$10,000. We do not require a specific percentage match, but we do look at leverage and funding partnerships very carefully. We will not consider grant requests in which our funding would amount to 50% or more of the project budget. PeopleForBikes generally holds 1-2 open grant cycles every year.

<https://peopleforbikes.org/grant-guidelines/>

PeopleForBikes focuses most grant funds on bicycle infrastructure projects such as:

- Bike paths, lanes, trails, and bridges
- Mountain bike facilities
- Bike parks and pump tracks
- BMX facilities
- End-of-trip facilities such as bike racks, bike parking, bike repair stations and bike storage
- We also fund some advocacy projects, such as:
- Programs that transform city streets, such as Ciclovías or Open Streets Days
- Campaigns to increase the investment in bicycle infrastructure

International Mountain Biking Association

To grow the quantity and quality of mountain bike trail communities, we need to accelerate the pace of trail building. Trail Accelerator grants provide a jump-start to communities that have the interest and political support to develop trail systems, but need assistance to get projects up and running. A Trail Accelerator grant offers awardees professional trail planning and consultation services to launch their trail development efforts, which can often leverage additional investment from local, regional, and national partners. Grants typically range from \$5,000-\$30,000 and they require a one-to-one match. <https://www.imba.com/trails-for-all/trail-accelerator-grants>

Potential Projects

- Projects that serve mountain bikers as the primary users, though multi-purpose human-powered trail uses are viable as well.
- Projects that will result in a visible and substantial increase in access, improved mountain bike experiences, and greater community benefit.
- Projects where the Trail Accelerator grant stands to leverage additional resources to ensure the success of the project.
- Projects that promote community development, volunteer recruitment, new rider development, youth riding, and engaging marginalized community members. Higher preference will be given to projects that demonstrate a focus on diversity, equity, and inclusion.

Natural Resources Foundation of Wisconsin

C.D. Besadny Conservation Fund grants

The C.D. Besadny Conservation Fund was established to invest in grassroots conservation and education projects that benefit Wisconsin's lands, waters, and wildlife, and that connect people to Wisconsin's natural resources. Grants range from \$500 to \$2,000.

Grantmaking Priorities:

- Innovative projects that leverage resources and partnerships.
- Projects that have measurable outcomes.
- Projects that engage and impact underserved communities in Wisconsin.

Submit all materials by email to Caitlin Williamson by March 1st or September 1st.

Contact:

Caitlin Williamson, Director of Conservation Programs
(608) 409-3109
Caitlin.Williamson@WisConservation.org

Norma and Stanley DeBoer Quiet Trails Fund

The Norma and Stanley DeBoer Quiet Trails Fund provides funding to support the creation and maintenance of quiet trails (e.g., walking, hiking, or skiing) in Wisconsin. Grants range from \$500 to \$1,000.

<https://www.wisconservation.org/grants/quiet-trails-fund/#:~:text=%20The%20Norma%20and%20Stanley%20DeBoer%20Quiet%20Trails,the%20following%3A%20a%20nonprofit%20organization%20with...%20More%20>

Grantmaking Priorities:

- The primary purpose is to create and maintain walking, hiking, or skiing trails open to the public in Wisconsin. This includes, but is not limited to: increasing access for people with disabilities; identification of trail locations; surveying; purchase of materials; construction; clean-up activities; repairs of trail surfaces, railings, or existing signage; and fees for necessary professional services.
- The secondary purpose is to enhance and promote quiet trails through activities including: habitat improvement adjacent to the trail; development, creation and installation of directional or explanatory signage and trail guide booklets; and modest costs of events designed to increase awareness and/or use of quiet trails.

Submit all materials to Caitlin Williamson by April 1st.

Contact:

Caitlin Williamson, Director of Conservation Programs
(608) 409-3109
Caitlin.Williamson@WisConservation.org

National Endowment for the Arts Our Town Grants

Our Town is the National Endowment for the Arts' creative placemaking grants program. Through project-based funding, we support projects that integrate arts, culture, and design activities into efforts that strengthen communities by advancing local economic, physical, and/or social outcomes. Successful Our Town projects ultimately lay the groundwork for systemic changes that sustain the integration of arts, culture, and design into local strategies for strengthening communities. These projects require a partnership between a local government entity and nonprofit organization, one of which must be a cultural organization; and should engage in partnership with other sectors (such as agriculture and food, economic development, education and youth, environment and energy, health, housing, public safety, transportation, and workforce development). Cost share/matching grants range from \$25,000 to \$150,000, with a minimum cost share/match equal to the grant amount.

<https://www.arts.gov/grants>

Projects

- Bring new attention to or elevate key community assets and issues, voices of residents, local history, or cultural infrastructure.
- Inject new or additional energy, resources, activity, people, or enthusiasm into a place, community issue, or local economy.
- Envision new possibilities for a community or place - a new future, a new way of overcoming a challenge, or approaching problem-solving.
- Connect communities, people, places, and economic opportunity via physical spaces or new relationships.

Submit applications in August.

Contacts:

SAM Federal Service Desk: Call 1-866-606-8220 or see the information posted on the SAM website at SAM User Help.

Grants.gov Contact Center: Call 1-800-518-4726, email support@grants.gov, or consult the information posted on the Grants.gov website at Support. The Grants.gov Contact Center is available 24 hours a day, 7 days a week.

Local Foundations and Organizations

Ducks Unlimited
Fort Community Foundation
Fort Health Care
Fort Wisconservation Club
Jefferson County Farmland Conservation Easement Program
Madison Audubon Society
Pheasants Forever
Quirk Foundation
The Nature Conservancy
TREK